



INSTALLATION GUIDE

Thank you for choosing a B-PWR product, designed by passionate riders who focus on what users really need.

1. SAFETY INSTRUCTIONS

To avoid any unfortunate situations, we recommend that you get to know how your modified vehicle handles before using it in extreme conditions.

Read all the instructions carefully before installing this product.

If you do not have the tools or technical knowledge needed to ensure proper installation, have the product installed by an authorized dealer.

⚠ WARNING

It is essential that you follow the installation procedures, possess general mechanical knowledge and use appropriate tools to ensure a safe and reliable installation.

Improper use or installation of the product, or any modifications made to adapt the product for use in a context other than that for which it was intended, voids the warranty and may result in **SERIOUS INJURIES**.

B-PWR and all its affiliated companies, as well as its suppliers and distributors, are not responsible for any consequences whatsoever resulting from an incorrect installation or an improper use of the product.

This guide provides detailed instructions for installing the product.

AVAILABLE KIT

TSD

COMPATIBILITY

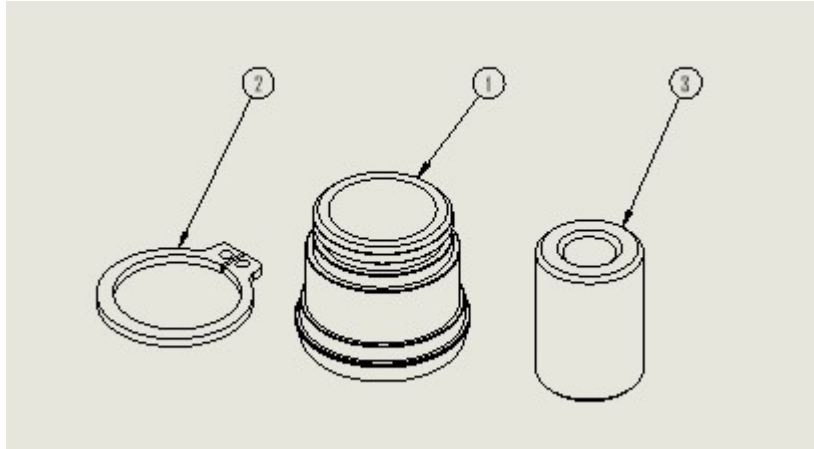
Ski-Doo Gen 4

⚠ WARNING

For safety reasons, this kit needs to be installed by a person with general mechanical knowledge using the proper tools.

The illustrations in this document indicate the typical structure of the various assemblies. It is therefore possible that they do not represent the exact form of the parts or the manufacturing details. These illustrations are intended to identify parts that perform an identical or similar function.

2. PARTS



PIÈCE	DESCRIPTION	QTÉ	NUMÉRO DE PIÈCE
P1	Brass bushing	1	TSD-001
P2	Snap ring 12mm	1	
P3	Stainless sleeve	1	TSD-002

3. PREPARATION OF THE VEHICLE

- 3.1 Read all instructions carefully before installing this product.
- 3.2 Make sure you have enough space to work well.
- 3.3 Make sure you have all the required tools.
- 3.4 Refer to vehicle owner's manual for removal of various panels and other parts.

4. INSTRUCTIONS

- 4.1 Lift up and support the back of your machine so the track is slightly off the ground. Make sure the machine is stable. Remove the plastic slides for your rear coil springs to release the spring pressure on the rear swing arm.



- 4.2 Remove the 8mm bolt holding your T-motion heim joint.



4.3 Remove plastic seal on both sides



4.4 Using a pair of snap ring pliers, remove the internal retaining ring holding the heim joint in.



4.5 Using a C clamp and two socket (15mm & 22mm), pressed out the heim joint.



4.6 Once the heim joint is removed, install the brass bushing from your delete kit in it's place, snap ring groove first. Try to push it in and line it up the best you can by hand first. Then, using a C clamp, press the brass in as straight as you can. Be very careful to press the brass in evenly. **DO NOT HAMMER DIRECTLY AGAINST THE BRASS.** The brass is very soft and will deform if hammered directly against, or with an uneven punch.

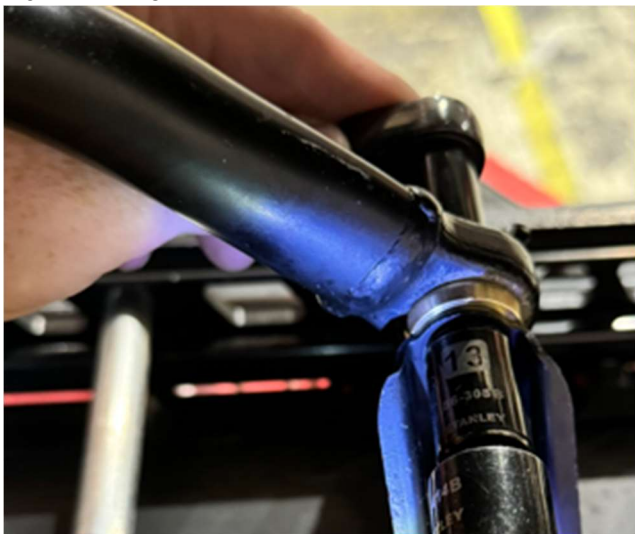


4.7 Once the brass is pressed in fully, install the retaining ring included in your kit. If the retaining ring does not seat fully in the groove, the brass is most likely not pressed in fully. Repeat step 4.6 to get the brass fully seated.

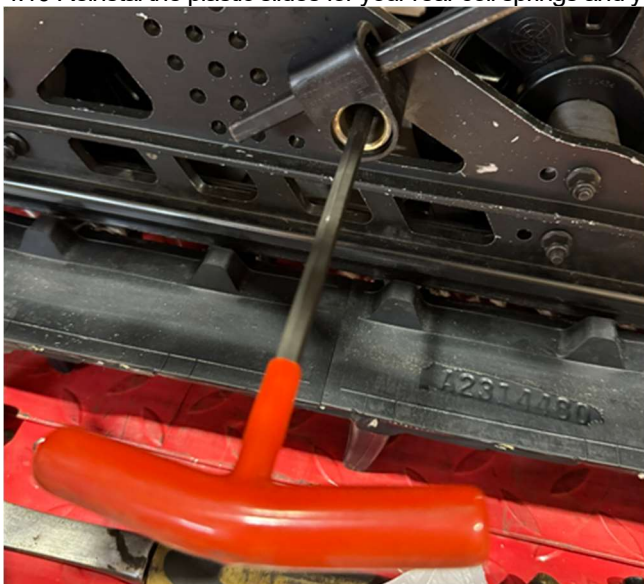


4.8 Install the stainless sleeve from your kit into the brass piece, and then reinstall the rear swing arm back into the triangle bracket.

4.9 Install the 8mm bolt



4.10 Reinstal the plastic slides for your rear coil springs and you're done!



TORQUE	
8mm bolt	30 N•m ± 2 N•m