



INSTALLATION GUIDE

Thank you for choosing a B-PWR product, designed by passionate riders who focus on what users really need.

1. SAFETY INSTRUCTIONS

To avoid any unfortunate situations, we recommend that you get to know how your modified vehicle handles before using it in extreme conditions.

Read all the instructions carefully before installing this product.

If you do not have the tools or technical knowledge needed to ensure proper installation, have the product installed by an authorized dealer.

⚠ WARNING

It is essential that you follow the installation procedures, possess general mechanical knowledge and use appropriate tools to ensure a safe and reliable installation.

Improper use or installation of the product, or any modifications made to adapt the product for use in a context other than that for which it was intended, voids the warranty and may result in **SERIOUS INJURIES**.

B-PWR and all its affiliated companies, as well as its suppliers and distributors, are not responsible for any consequences whatsoever resulting from an incorrect installation or an improper use of the product.

This guide provides detailed instructions for installing the product.

AVAILABLE KIT

SG5FB-HD / SG5FB-SP

COMPATIBILITY

Ski-Doo Gen 5 / Gen 4 (**SG5FB-HD**)

Ski-Doo Gen 5 / Gen 4 EQUIPPED WITH OEM SKID – PLATE (**SG5FB-SP**)

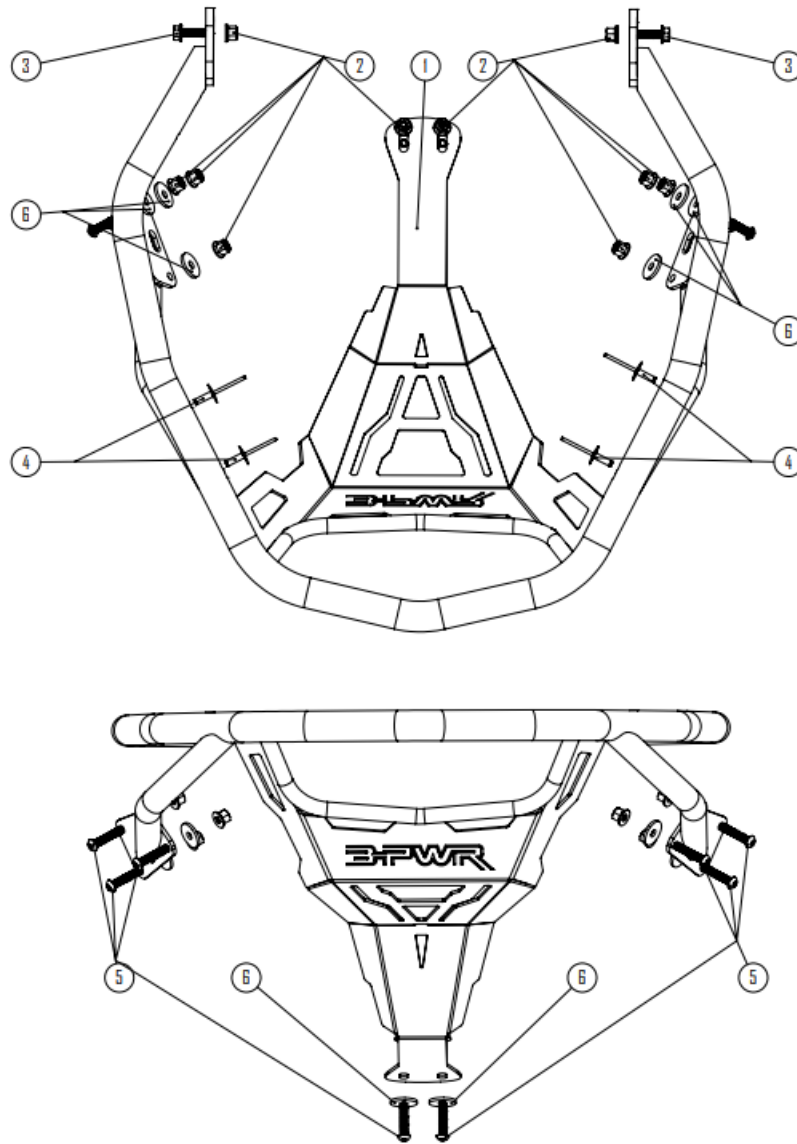
⚠ WARNING

For safety reasons, this kit needs to be installed by a person with general mechanical knowledge using the proper tools.

The illustrations in this document indicate the typical structure of the various assemblies. It is therefore possible that they do not represent the exact form of the parts or the manufacturing details. These illustrations are intended to identify parts that perform an identical or similar function.

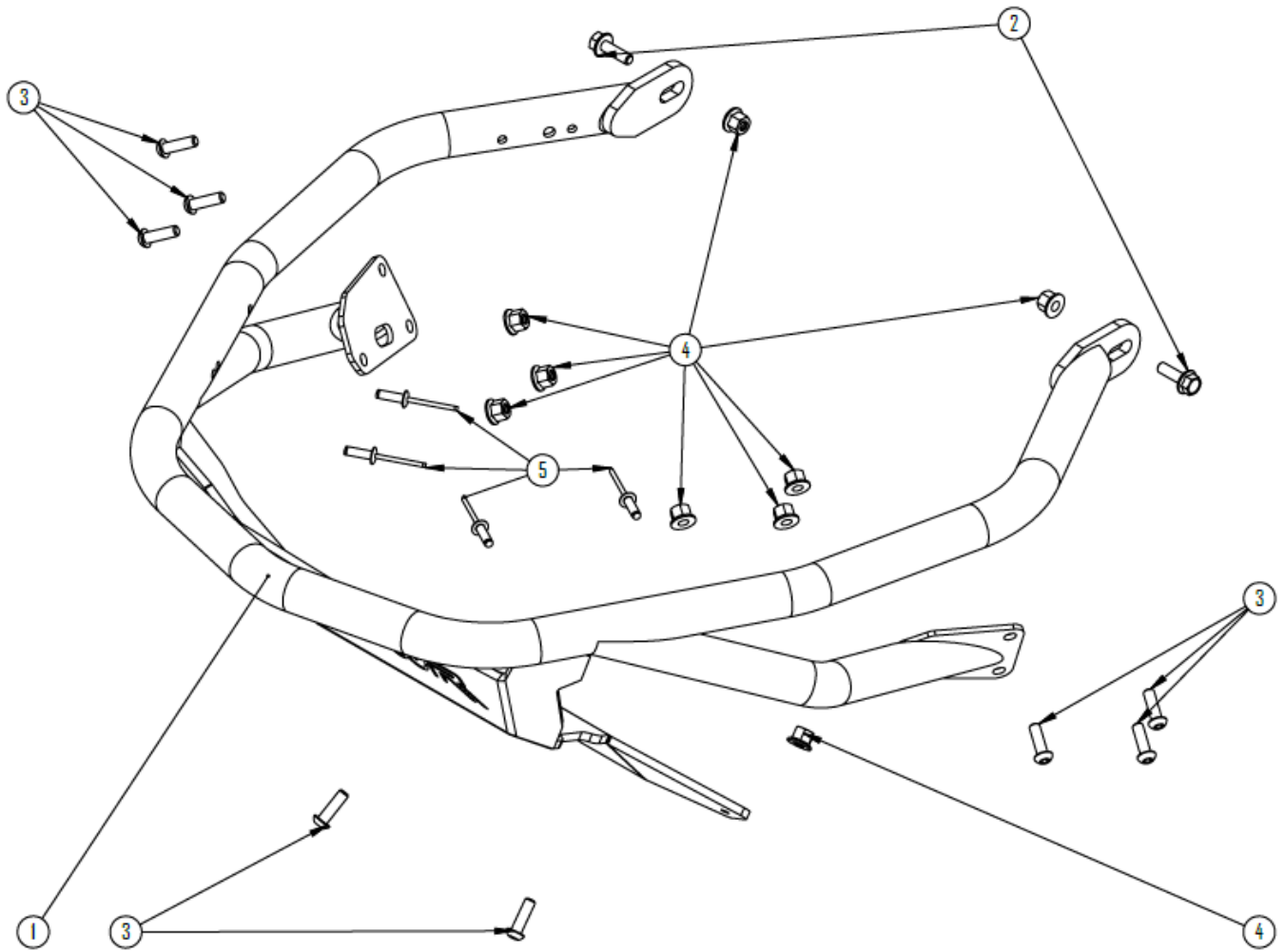
2. PARTS

G5 HD front bumper



PART	DESCRIPTION	QTY	PART NUMBER
P1	FRONT BUMPER G5	1	10-0013
P2	M6 NYLON LOCKNUT	10	K05-SG5FB-SP
P3	HEX HEAD SCREW M6 X 20 mm	2	
P4	RIVET 3/16 "	4	
P5	BUTTON HEAD SCREW M6 X 20 mm	8	
P6	M6 FLAT WASHER	8	

G5 SP front bumper (compatible with OEM skid – plate)



PART	DESCRIPTION	QTY	PART NUMBER
P1	FRONT BUMPER G5	1	10-0013
P2	HEX HEAD SCREW M6 X 20 mm	2	K05-SG5FB-SP
P3	BUTTON HEAD SCREW M6 X 20 mm	8	
P4	NYLON LOCKNUT M6	10	
P5	RIVET 3/16"	4	

3. PREPARATION OF THE VEHICLE

- 3.1 Read all instructions carefully before installing this product.
- 3.2 Make sure you have enough space to work well.
- 3.3 Make sure you have all the required tools.
- 3.4 Refer to vehicle owner's manual for removal of various panels and other parts.

4. INSTRUCTIONS

- 4.1 Remove the side panels, the hood and the tune pipe. Consult the owner's manual for this step.



- 4.2 Remove the existing bumper. Drill the rivets using a 3/8" dia drill bit. Take the necessary precautions to avoid damaging the plastic of the bodywork.

4.3 Install the G5 front bumper with two (2) M6 X 20mm hex shoulder screws and M6 self-locking nuts. Hand tighten only.



4.4 Position the bumper in order to obtain an optimal adjustment of the side plates with the bodywork.



4.5 Secure the G5 front bumper with four (4) 3/16" rivets using a hand riveter.



4.6 Insert in place the muffler temperature switch bracket.



4.7 Tighten to the specified torque two (2) M6 self-locking nuts,



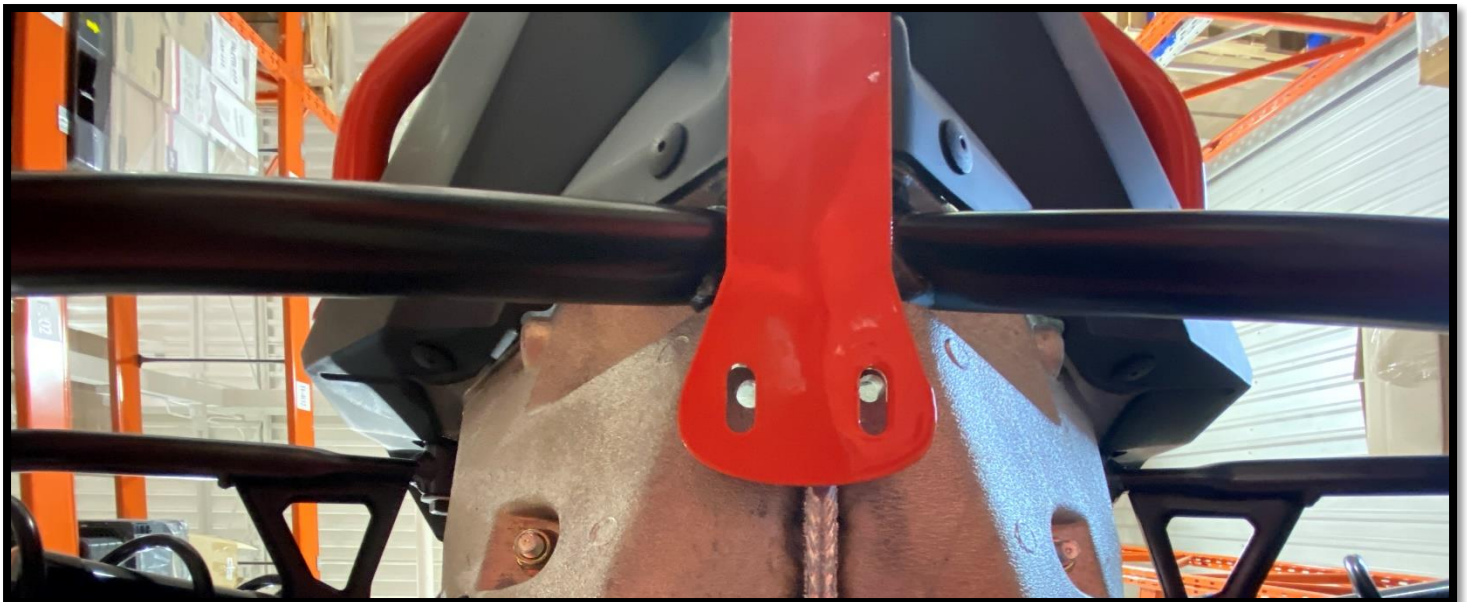
TORQUE	
LOCK NUT	10 N•m ± 2 N•m

4.8 Drill the hull of the snowmobile through the holes in the side plates of the G5 bumper with a 3/16" drill bit. Secure using M6 x 20 mm screws and nuts.



TORQUE	
LOCK NUT	10 N•m ± 2 N•m

4.9 **For the HD front bumper only**, drill two (2) holes under the vehicle using the G5 front bumper as a template using a 3/16" drill bit. Secure using two (2) M6 x 20mm screws and nuts.



TORQUE	
LOCK NUT	10 N•m ± 2 N•m

4.10 **For the Skid-plate (SP) bumper only**, drill two (2) holes in the OEM plastic skid-plate using the G5 front bumper as a template using a 3/16" drill bit. Secure the front bumper with two (2) M6 x 20mm screws and nuts.



4.11 Reinstall the muffler and various panels by reversing the removal steps. Refer to owner's manual.
Note: Be sure to reconnect the connectors to the center panel.