



# INSTALLATION GUIDE

Thank you for choosing a B-PWR product, designed by passionate riders who focus on what users really need.

## 1. SAFETY INSTRUCTIONS

To avoid any unfortunate situations, we recommend that you get to know how your modified vehicle handles before using it in extreme conditions.

Read all the instructions carefully before installing this product.

If you do not have the tools or technical knowledge needed to ensure proper installation, have the product installed by an authorized dealer.

### ⚠ WARNING

It is essential that you follow the installation procedures, possess general mechanical knowledge and use appropriate tools to ensure a safe and reliable installation.

Improper use or installation of the product, or any modifications made to adapt the product for use in a context other than that for which it was intended, voids the warranty and may result in **SERIOUS INJURIES**.

B-PWR and all its affiliated companies, as well as its suppliers and distributors, are not responsible for any consequences whatsoever resulting from an incorrect installation or an improper use of the product.

This guide provides detailed instructions for installing the product.

### AVAILABLE KIT

RBLSHRED-3700, RBLSHRED-3900, RBLSHRED-4100

### COMPATIBILITY

Lynx Shredder platform

### ⚠ WARNING

For safety reasons, this kit needs to be installed by a person with general mechanical knowledge using the proper tools.

The illustrations in this document indicate the typical structure of the various assemblies. It is therefore possible that they do not represent the exact form of the parts or the manufacturing details. These illustrations are intended to identify parts that perform an identical or similar function.

## 2. PARTS RBLSHRED-3700

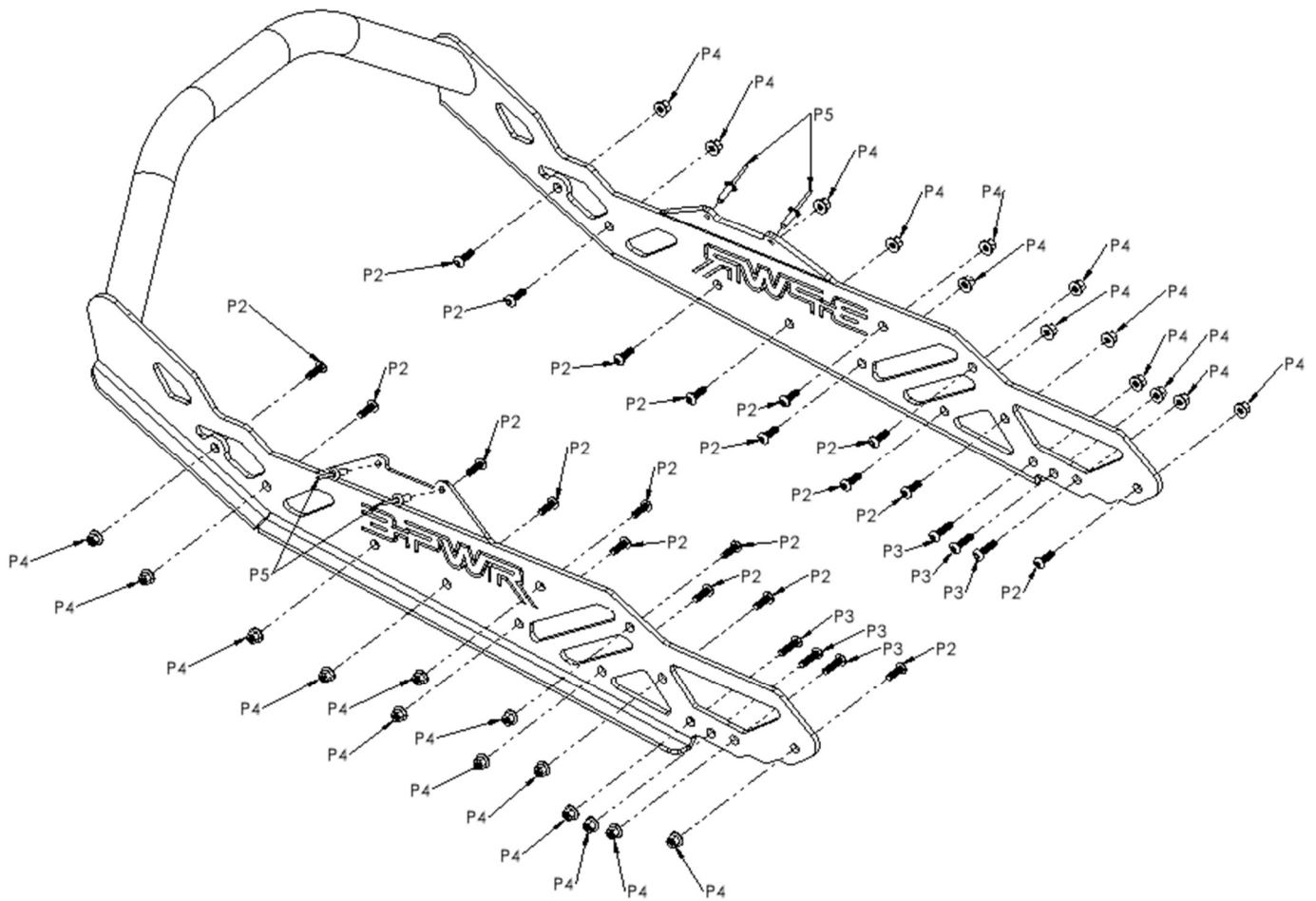


Fig. 1.1

PART	DESCRIPTION	QTY	PART NUMBER
P1	REAR BUMPER	1	K05-RBLSHRED
P2	SCREW M5 x 0.8 16MM	22	
P3	SCREW M5 x 0.8 20MM	6	
P4	M5 x 0.8 HEXAGONAL FLANGED LOCK NUT	28	
P5	BLIND RIVET 3/16"	6	

\*(extra screws and nuts)

# 1. PARTS RBLSHRED-3900

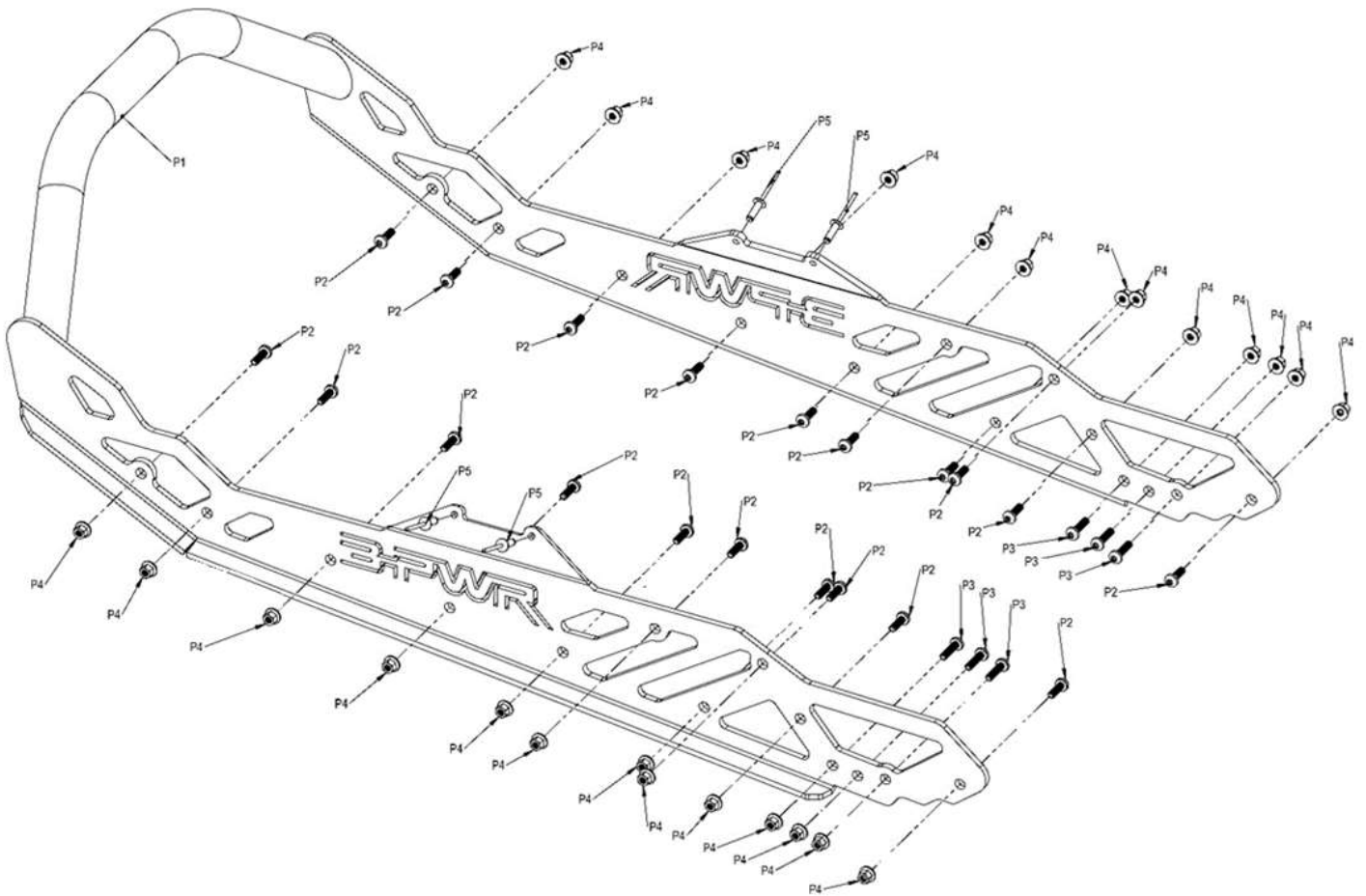


Fig. 1.2

PART	DESCRIPTION	QTY	PART NUMBER
P1	REAR BUMPER	1	K05-RBLSHRED
P2	SCREW M5 x 0.8 16MM	22	
P3	SCREW M5 x 0.8 20MM	6	
P4	M5 x 0.8 HEXAGONAL FLANGED LOCK NUT	28	
P5	BLIND RIVET 3/16"	6	

\*(extra screws and nuts)

# 1. PARTS RBLSHRED-4100

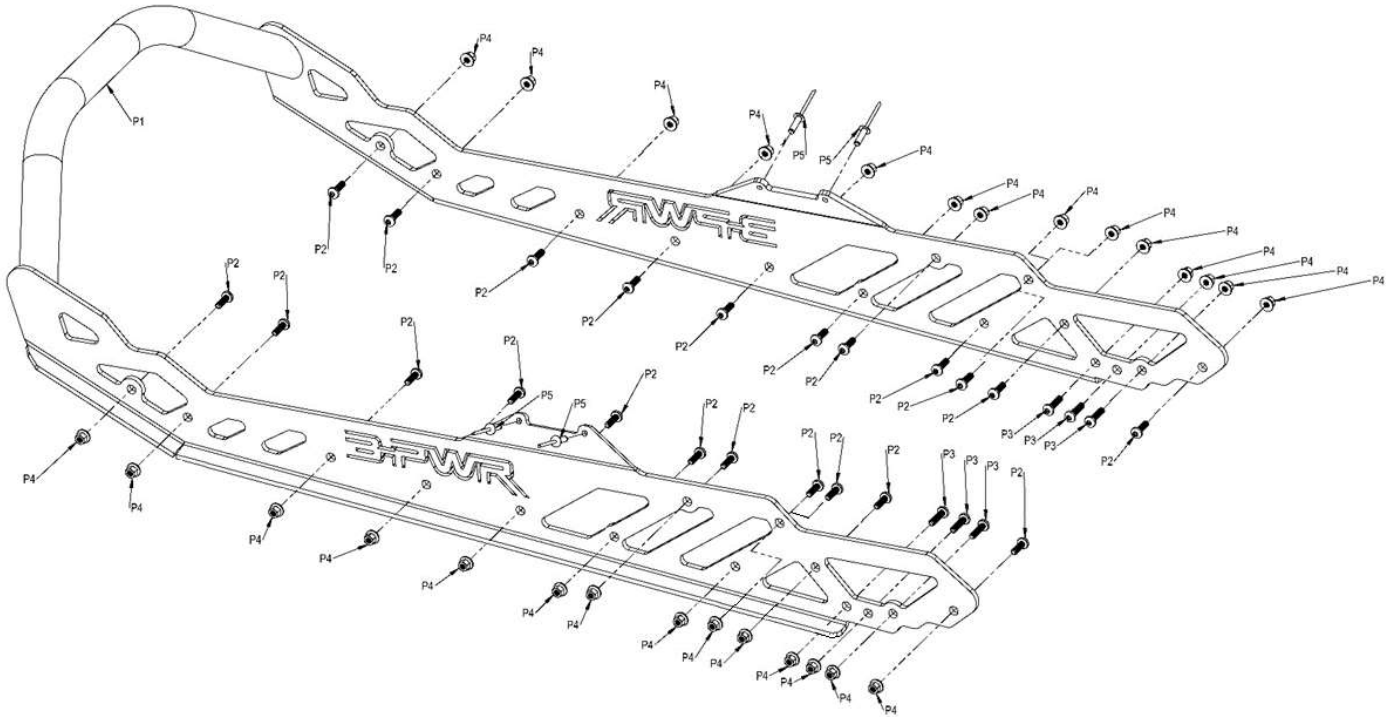


Fig. 1.3

PART	DESCRIPTION	QTY	PART NUMBER
P1	REAR BUMPER	1	K05-RBLSHRED
P2	SCREW M5 x 0.8 16MM	22	
P3	SCREW M5 x 0.8 20MM	6	
P4	M5 x 0.8 HEXAGONAL FLANGED LOCK NUT	28	
P5	BLIND RIVET 3/16"	6	

### 3. VEHICLE PREPARATION

- 3.1 Read all the instructions carefully before installing the product.
- 3.2 Make sure you have enough space to work properly.
- 3.3 Make sure to have the required tools.
- 3.4 Refer to vehicle owner's manual for removal of various panels and other parts.

### 4. INSTRUCTIONS

*Note: Unless differences occur between left hand (LH) and right hand (RH) sides, the procedures are shown for only one side of the vehicle. Repeat for other side. Right and left sides are defined as when sitting on the vehicle.*

- 4.0 Measure the position of suspension stopper. (fig 1.4)
- 4.1 Release suspension. Then remove suspension.

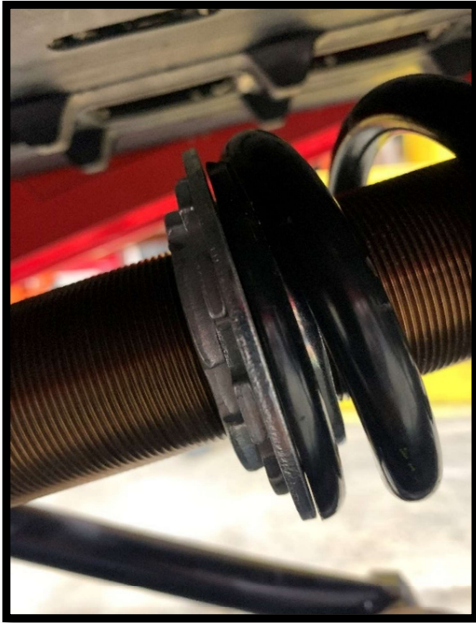


fig 1.4

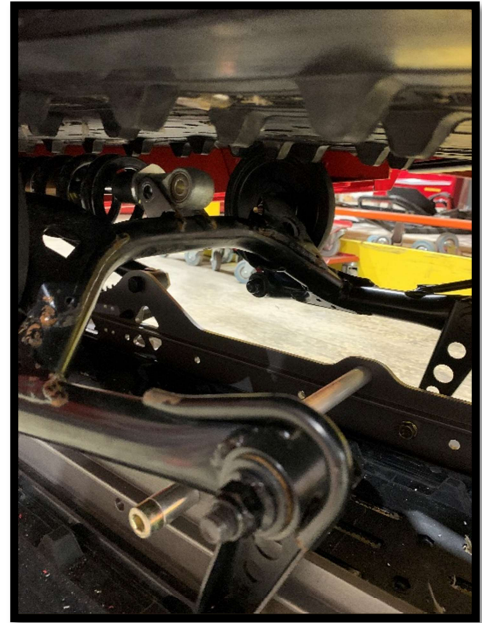


fig 1.5

- 4.2 Using the foot step, lift tunnel.

- 4.3 Remove deflectors and side plate on each side. Remove all rivet holding the side plate with a 3/16" drill bit. Take precautions to avoid damaging tunnel.

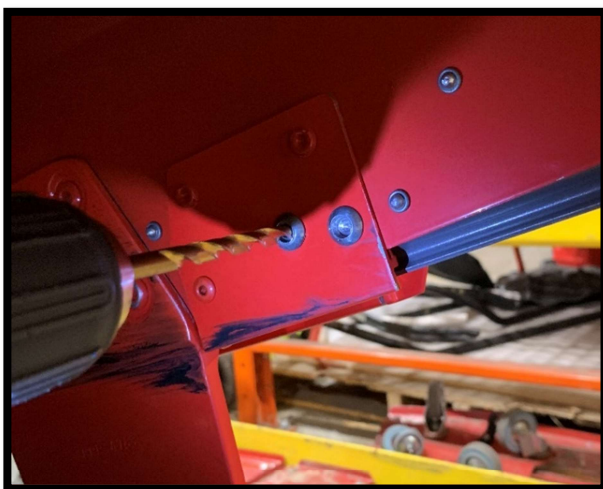


fig 1.6



fig 1.7

n



4.3 Put back rivet [P5] on each side of the snow flap (fig 1.8)

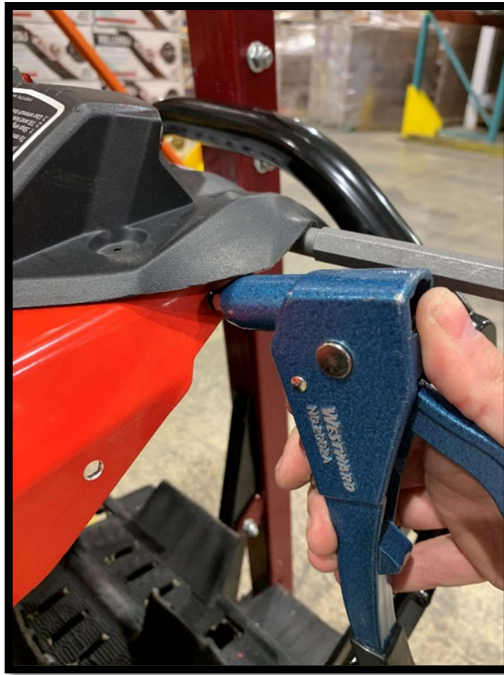


fig 1.8

4.4 Slide rear bumper [P1] in position on vehicle as shown.



fig 1.9

4.5 Insert screws M5-0.8 x 16mm [P2] and the three (3) M5-0,8 X 20mm [P3] in the holes with the heads inside the tunnel and screw in the M5 nylon lock nuts [P4]. Do not thighten the screws before installing all the screws in.  
Note : Use holes already present in tunnel

***Attention :*** see fig 1.1, fig 1.2 and fig 1.3 for the position of the screws according to their lenght.

4.6 Tighten screws to the recommanded torque. See fig 1.10

fig 1.10

TIGHTENING TORQUE	
M5 screws and nuts	6 N•m ± 2 N•m

4.7 (OPTIONAL) Drill rivet hole in the tunnel using the bumper as template with drill bit 3/16" (fig 1.11) , **IMPORTANT : Bumper must be screwed and tightened before drilling**

4.8 (OPTIONAL) Fix rear bumper with 3/16" rivet [P5] in previously drilled holes as shown.(fig 1.12)



fig 1.11



fig 1.12

4.9 Reassemble the vehicle following manufacturers recommendations.