



INSTALLATION GUIDE

Thank you for choosing a B-PWR product, designed by passionate riders who focus on what users really need.

1. SAFETY INSTRUCTIONS

To avoid any unfortunate situations, we recommend that you get to know how your modified vehicle handles before using it in extreme conditions.

Read all the instructions carefully before installing this product.

If you do not have the tools or technical knowledge needed to ensure proper installation, have the product installed by an authorized dealer.

⚠ WARNING

It is essential that you follow the installation procedures, possess general mechanical knowledge and use appropriate tools to ensure a safe and reliable installation.

Improper use or installation of the product, or any modifications made to adapt the product for use in a context other than that for which it was intended, voids the warranty and may result in **SERIOUS INJURIES**.

B-PWR and all its affiliated companies, as well as its suppliers and distributors, are not responsible for any consequences whatsoever resulting from an incorrect installation or an improper use of the product.

This guide provides detailed instructions for installing the product.

AVAILABLE KIT

Front Bumper Matryx LD / HD

COMPATIBILITY

Polaris RMK Matryx

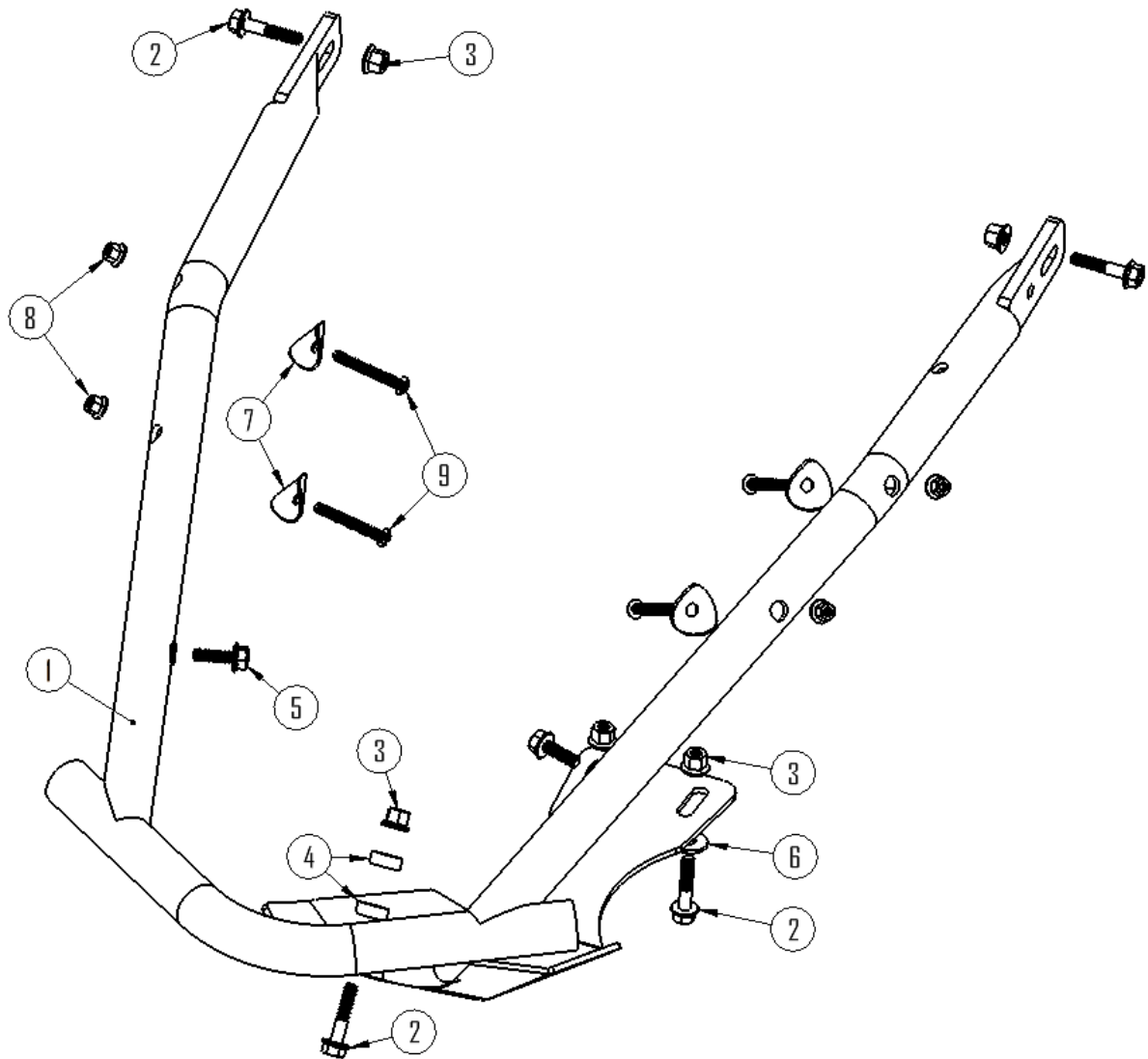
⚠ WARNING

For safety reasons, this kit needs to be installed by a person with general mechanical knowledge using the proper tools.

The illustrations in this document indicate the typical structure of the various assemblies. It is therefore possible that they do not represent the exact form of the parts or the manufacturing details. These illustrations are intended to identify parts that perform an identical or similar function.

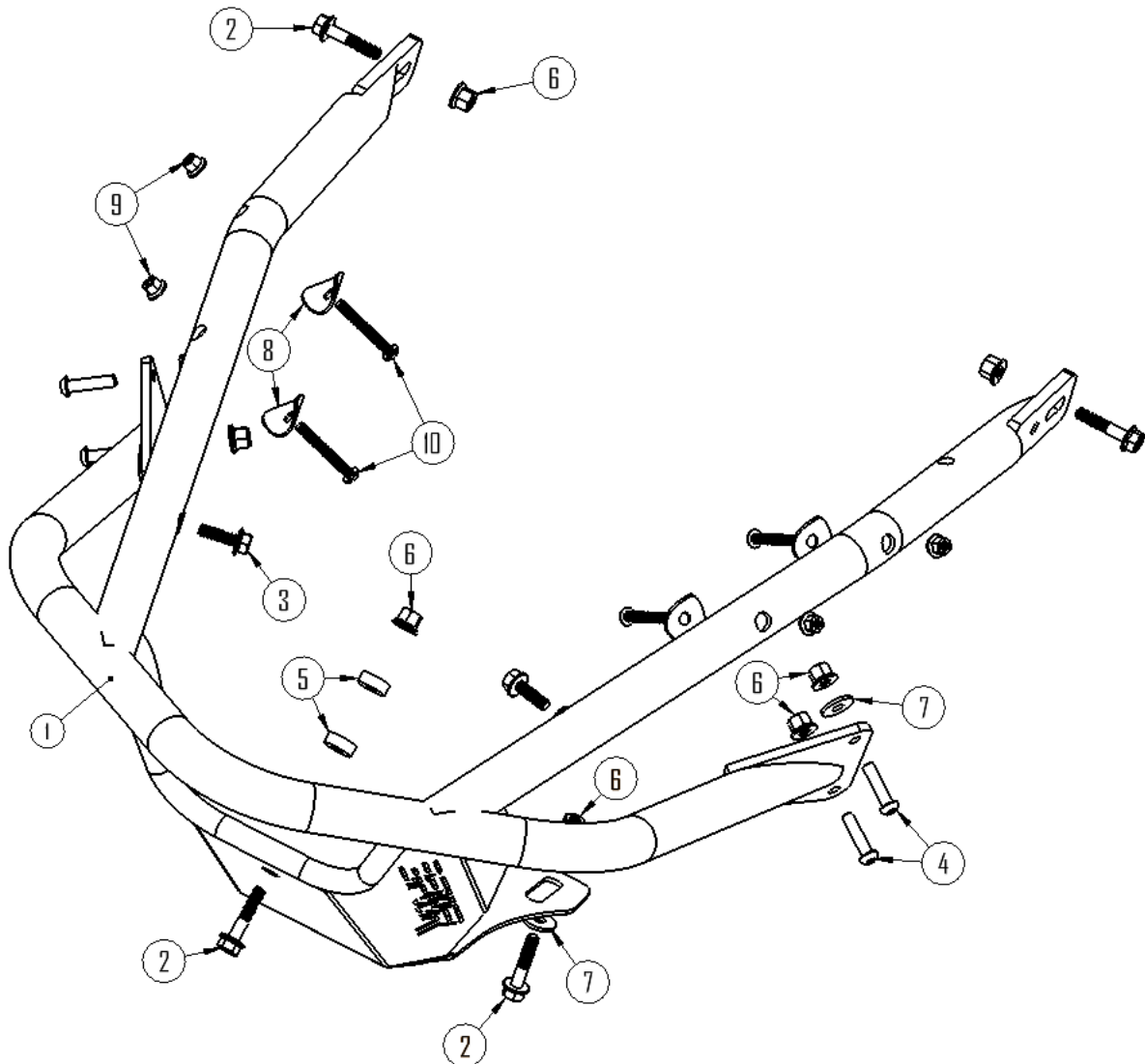
2. PARTS

Matryx Light-Duty (LD) Front Bumper



| PART | DESCRIPTION | QTY | PART NUMBER |
|------|----------------------------------|-----|--------------|
| P1 | Light Duty Front Bumper | 1 | K05-52105-00 |
| P2 | Hex bolt M6-1.0 X 30 mm | 5 | |
| P3 | Nut M6-1.0 Nyl. | 5 | |
| P4 | Spacer 6 mm Acetal white | 2 | |
| P5 | Hex bolt M6-1.0 X 20 mm | 2 | |
| P6 | Washer M6 type fender washer | 3 | |
| P7 | 1" curved washer | 4 | |
| P8 | Lock Nut M5 X0,8 Nylon | 4 | |
| P9 | Screw M5 0,8 40mm Fully Threaded | 4 | |
| P10 | Washer 34mm | 1 | |

Matryx Heavy-Duty (HD) Front Bumper



| PART | DESCRIPTION | QTY | PART NUMBER |
|------|----------------------------------|-----|--------------|
| P1 | Heavy Duty Bumper | 1 | K05-52106-00 |
| P2 | Bolt Hex M6-1.0 X 30 mm | 5 | |
| P3 | Bolt Hex M6-1.0 X 20 mm | 2 | |
| P4 | Screw Torx M6-1.0 x 25 T30 | 4 | |
| P5 | Wahser 6 mm Acetal white | 2 | |
| P6 | Nut M6-1.0 Nyl. | 9 | |
| P7 | Washer M6 type fender washer | 7 | |
| P8 | 1" curved washer | 4 | |
| P9 | Lock nut M5 X0,8 Nylon | 4 | |
| P10 | Screw M5 0,8 40mm Fully Threaded | 4 | |
| P11 | Washer 34mm | 1 | |

3. VEHICLE PREPARATION

- 3.1 Read all the instructions carefully before installing the product.
- 3.2 Make sure you have enough space to work properly.
- 3.3 Make sure to have the required tools.
- 3.4 Refer to vehicle owner's manual for removal of various panels and other parts.

4. INSTRUCTIONS

Note: Unless differences exist between left hand (LH) and right hand (RH) sides, the procedures are shown for only one side of the vehicle. Repeat for the other side. Right and left sides are defined as when sitting on the vehicle.

- 4.1 Remove the 2 side panels, upper panel, and front bumper.

Note: Be sure to conserve the bracket & spring



4.2 Install a washer [P11] under the muffler support



4.3 Remove the side panel support brackets from the stock bumper, and install them on your new B-PWR bumper using the screw [P10], curved washer [P8] and nut [P9]

Note: Ensure to install support brackets in same configuration as stock (front/back, left/right)



4.4 Install center front, by hand, bolt, washer and nut as per your model and options [P2 – P5 – P7 - P6] (See steps 4.4.1 to 4.4.4)





4.4.1 Heavy Duty without Skidplate
 Note : 2x Washer [P5] and 1x Washer [P7]



4.4.2 Heavy Duty with Skidplate
 Note : 1x Washer [P5] and 1x Washer [P7]



4.4.3 Light Duty without Skidplate
 Note : 1X Washer [P5] and 1x Washer [P7]

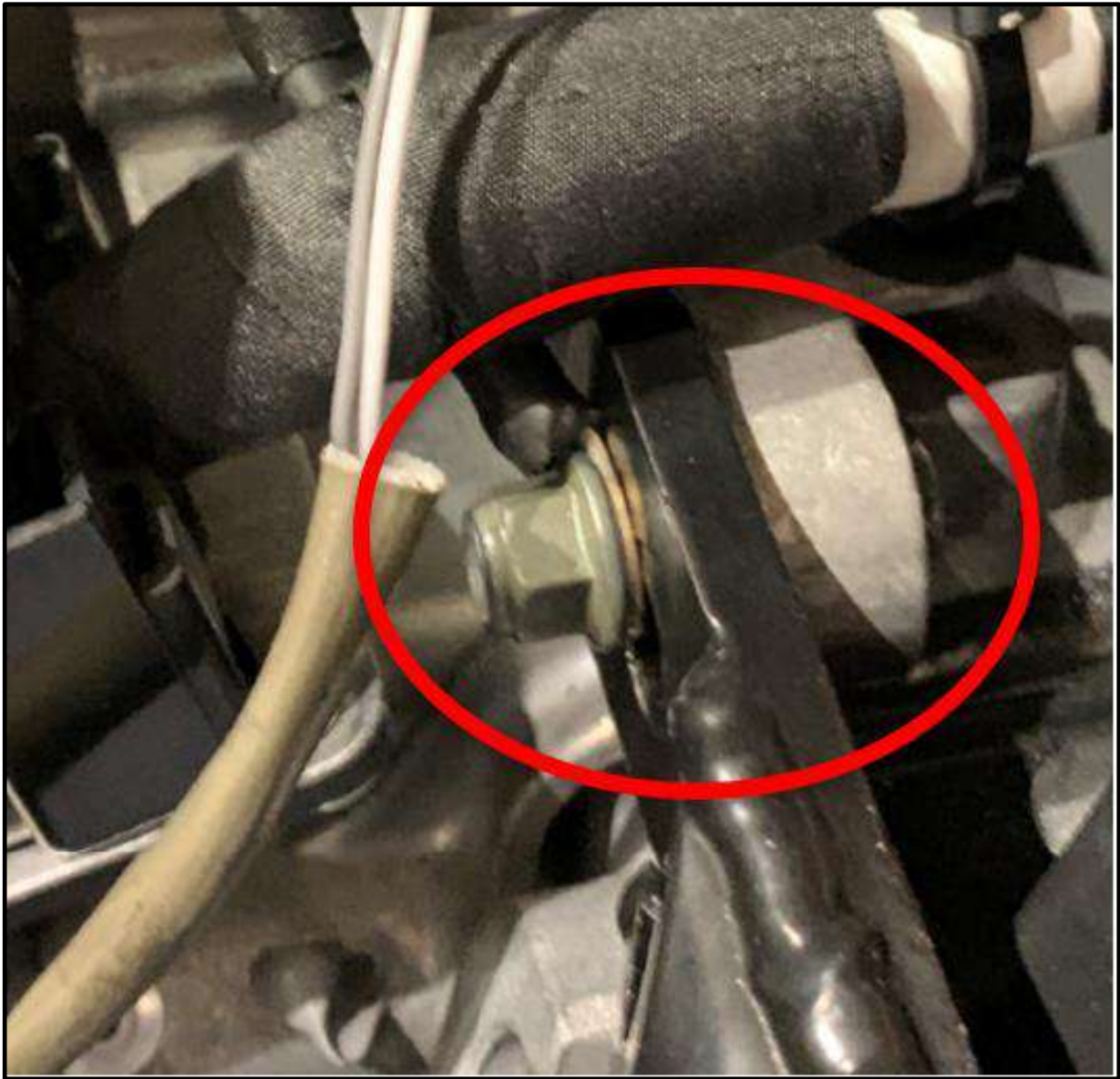


4.4.4 Light Duty with Skidplate
 Note : 1x Washer [P7]

| TIGHTENING TORQUE | |
|------------------------|---|
| Bolt & nuts M6 [P2-P6] | 12.8 N•m ± 2.2 N•m (113 lbs/in ± 19 lbs/in) |

4.5 Hand tighten the nut and bolt [P2-P6] on the rear, left side of the bumper

Note : Ensure to include ground-wire in this assembly.



4.6 Hand tighten the nut and bolt [P2-P6] on the rear, right side of the bumper

Note : Ensure to place stock spring support bracket back in this assembly.



4.7 Tighten Hex bolt M6-1.0 X 20 mm [P3]



| TIGHTENING TORQUE | |
|-------------------|---|
| Bolt - [P3] | 12.8 N•m ± 2.2 N•m (113 lbs/in ± 19 lbs/in) |

4.8 Install the upper panel. Apply pressure towards the rear of vehicle to align the brackets and panel joints. Tighten the 2 rear bolts [P2–P6]



| TIGHTENING TORQUE | |
|---------------------------|---|
| Bolts & Nuts M6 - [P2-P6] | 12.8 N•m ± 2.2 N•m (113 lbs/in ± 19 lbs/in) |

4.9 Verify the alignment of the brackets and upper panels prior to tightening bolts & nuts [P10-P9]



| TIGHTENING TORQUE | |
|--------------------------|--|
| Bolts & nuts M5 [P10-P9] | 7.8 N•m ± 0.7 N•m (69 lbs/in ± 6 lbs/in) |

4.10 Lift the front portion of the upper panel to provide access to the 2nd bolt of the support bracket, then tighten [P10 – P9]



| TIGHTENING TORQUE | |
|------------------------|--|
| Bolt & nut M5 [P10-P9] | 7.8 N•m ± 0.7 N•m (69 lbs/in ± 6 lbs/in) |

4.11 For the HD bumper : using a $\text{\O}1/4$ " drill bit and the bumper as a template, the holes in the panel to install the screws, washer and nuts [P4-P7-P6]. Hand-tighten only.



4.12 Using a $\text{\O}1/4$ " drill bit and the bumper as a template, drill the holes in the panel underneath the vehicle to install the screws, washer and nuts [P4-P7-P6]. Hand-tighten only.



4.13 Tighten all screws and nuts. [P4-P7-P6]



| TIGHTENING TORQUE | |
|----------------------------|---|
| Screw & nut M6 - [P4 - P6] | 12.8 N•m \pm 2.2 N•m (113 lbs/in \pm 19 lbs/in) |

4.14 Replace side panels

Note : Be sure to re-connect side panel connectors.

