



INSTALLATION GUIDE

Thank you for choosing a B-PWR product, designed by passionate riders who focus on what users really need.

1. SAFETY INSTRUCTIONS

To avoid any unfortunate situations, we recommend that you get to know how your modified vehicle handles before using it in extreme conditions.

Read all the instructions carefully before installing this product.

If you do not have the tools or technical knowledge needed to ensure proper installation, have the product installed by an authorized dealer.

⚠ WARNING

It is essential that you follow the installation procedures, possess general mechanical knowledge and use appropriate tools to ensure a safe and reliable installation.

Improper use or installation of the product, or any modifications made to adapt the product for use in a context other than that for which it was intended, voids the warranty and may result in **SERIOUS INJURIES**.

B-PWR and all its affiliated companies, as well as its suppliers and distributors, are not responsible for any consequences whatsoever resulting from an incorrect installation or an improper use of the product.

This guide provides detailed instructions for installing the product.

AVAILABLE KIT

PAFB-X

COMPATIBILITY

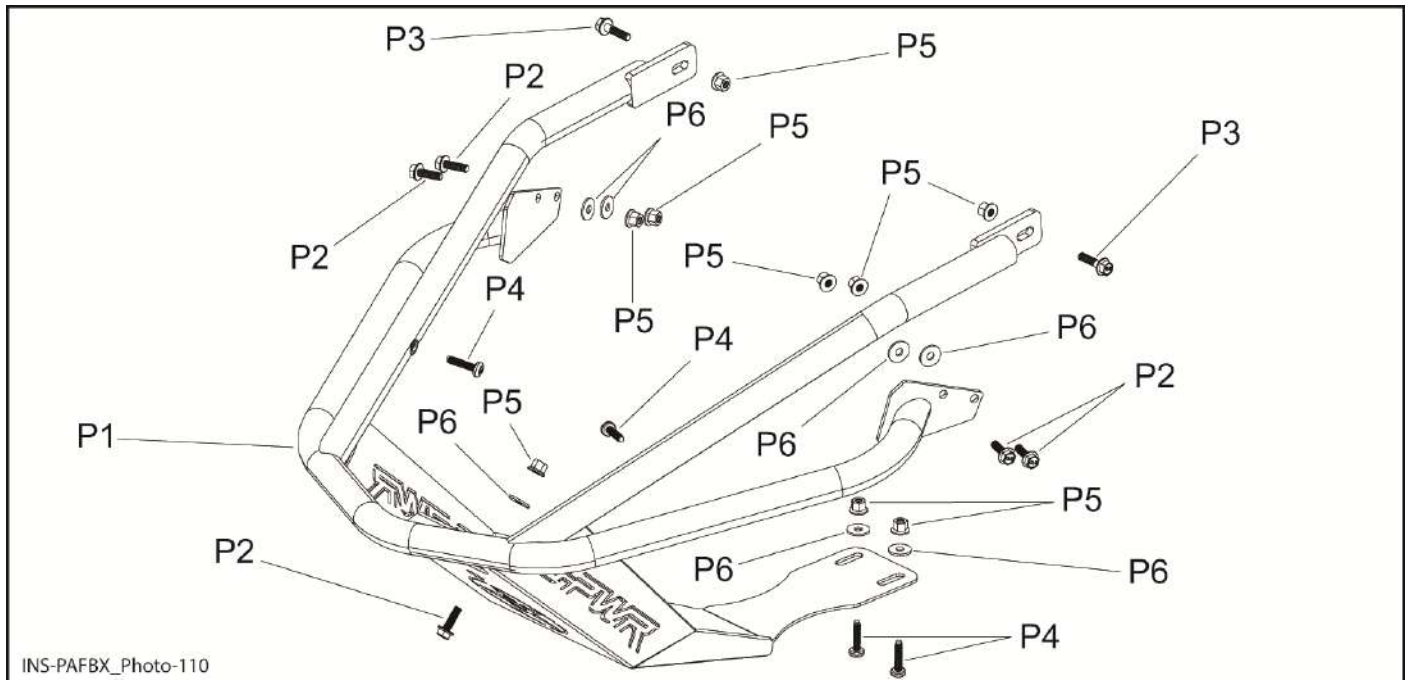
Polaris Axys platform

⚠ WARNING

For safety reasons, this kit needs to be installed by a person with general mechanical knowledge using the proper tools.

The illustrations in this document indicate the typical structure of the various assemblies. It is therefore possible that they do not represent the exact form of the parts or the manufacturing details. These illustrations are intended to identify parts that perform an identical or similar function.

2. PARTS



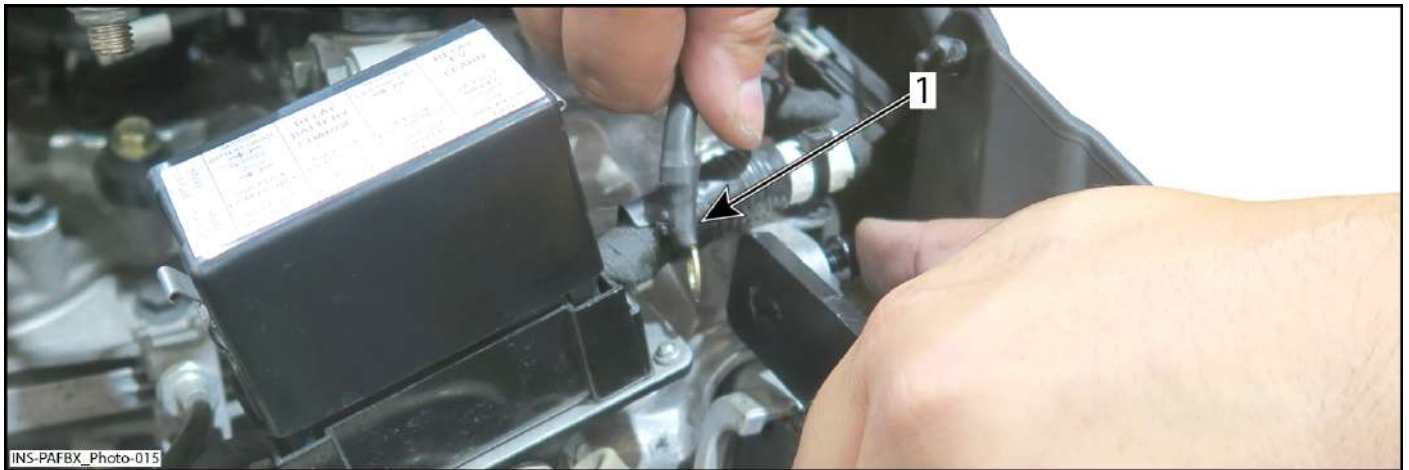
ITEM	DESCRIPTION	QTY	PART NUMBER
P1	Front Bumper	1	
P2	M6 X 20 mm Hexagonal Flanged Screw	5	K05-PAFB-X
P3	M6 X 25 mm Hexagonal Flanged Screw	2	
P4	M6 X 25 mm Rounded Head Screw	4	
P5	M6 Nylon Lock Nut	9	
P6	M6 Washer	7	

3. VEHICLE PREPARATION

- 3.1 Read all the instructions carefully before installing the product.
- 3.2 Make sure you have enough space to work properly.
- 3.3 Make sure to have the required tools.
- 3.4 Refer to vehicle owner's manual for removal of various panels and other parts.

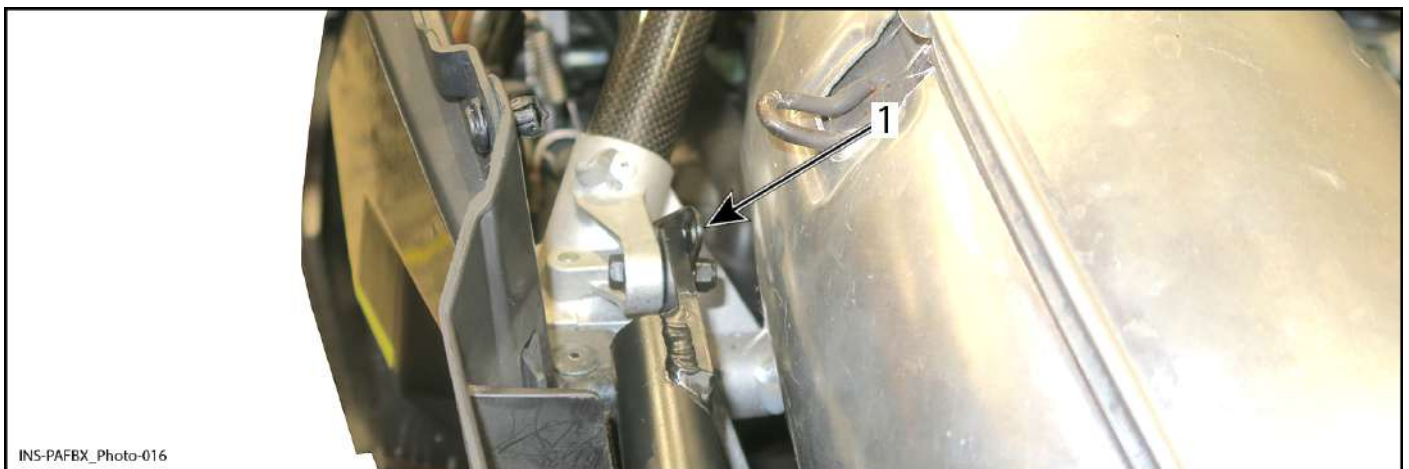
4. INSTRUCTIONS

- 4.1 Position front bumper [P1] with a M6 X 25 mm hexagonal flanged screw [P3], M6 nylon lock nut [P5] and ground as shown. Hand tighten only.



1- Ground located on LH side

- 4.2 Locate front bumper [P1] with a M6 X 25 mm hexagonal flanged screw [P3], M6 nylon lock nut [P5] and exhaust retaining spring plate as shown. Hand tighten only.



1- Exhaust retaining spring plate

4.3 Secure front bumper [P1] with two (2) M6 X 25 rounded head screw [P4].



1- LH side shown

TIGHTENING TORQUE	
M6 X 25 rounded head screw [P4]	10 N•m ± 2 N•m

4.4 Tighten to specification two (2) M6 nylon lock nut [P5] as shown.



TIGHTENING TORQUE	
M6 Nylon Lock Nut [P5]	10 N•m ± 2 N•m

4.5 Secure front bumper [P1] with a M6 X 20 mm hexagonal flanged screw [P2] M6 nylon lock nut [P5] and M6 washer [P6] as shown.

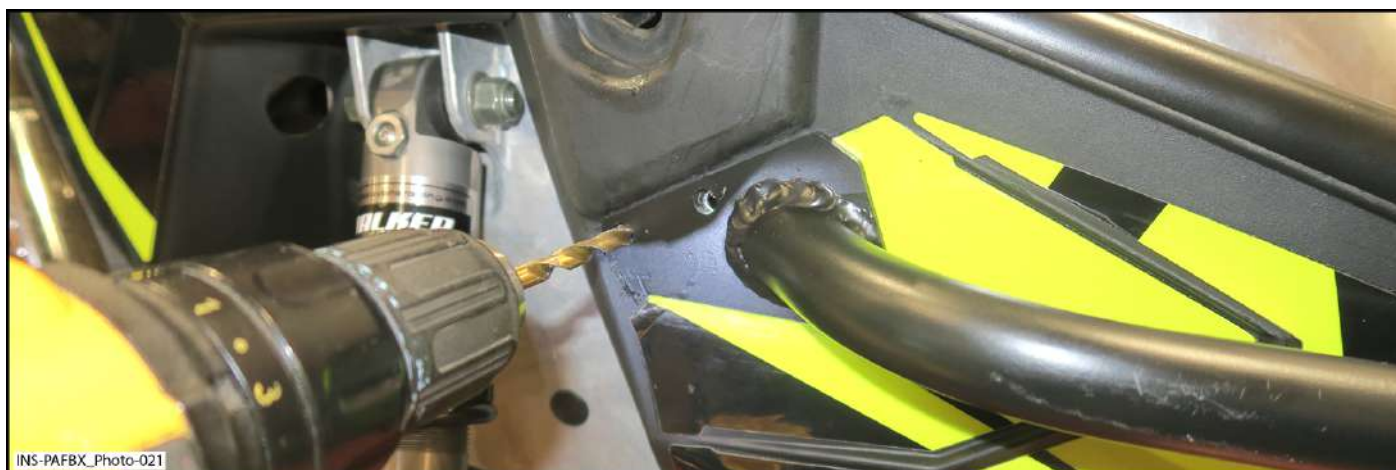


TIGHTENING TORQUE	
M6 Nylon Lock Nut [P5]	10 N•m ± 2 N•m

4.6 Install exhaust retaining spring previously removed.



4.7 Drill four (4) holes in front panel using front bumper [P1] as a template with a drill bit 1/4" as shown.



4.8 Secure front bumper [P1] with four (4) M6 X 20 mm hexagonal flanged screw [P2], M6 nylon lock nut [P5] and M6 washer [P6] as shown.



TIGHTENING TORQUE	
M6 nylon lock nut [P5]	10 N•m ± 2 N•m

4.9 Secure front bumper [P1] with two (2) M6 X 25 rounded head screw [P4], M6 nylon lock nut [P5] and M6 washer [P6] .



TIGHTENING TORQUE	
M6 nylon lock nut [P5]	10 N•m ± 2 N•m

4.10 Here is final result of installation of assembly.



4.11 Install various panels in reverse sequence of removal procedure.

Note : Ensure that previously removed connections are properly made to center panel.