



INSTALLATION GUIDE

Thank you for choosing a B-PWR product, designed by passionate riders who focus on what users really need.

1. SAFETY INSTRUCTIONS

To avoid any unfortunate situations, we recommend that you get to know how your modified vehicle handles before using it in extreme conditions.

Read all the instructions carefully before installing this product.

If you do not have the tools or technical knowledge needed to ensure proper installation, have the product installed by an authorized dealer.

⚠ WARNING

It is essential that you follow the installation procedures, possess general mechanical knowledge and use appropriate tools to ensure a safe and reliable installation.

Improper use or installation of the product, or any modifications made to adapt the product for use in a context other than that for which it was intended, voids the warranty and may result in **SERIOUS INJURIES**.

B-PWR and all its affiliated companies, as well as its suppliers and distributors, are not responsible for any consequences whatsoever resulting from an incorrect installation or an improper use of the product.

This guide provides detailed instructions for installing the product.

AVAILABLE KIT

SXT-34-2, SXT-34-4

COMPATIBILITY

Ski-Doo G5 platform equipped with the 34" stance as standard

⚠ WARNING

For safety reasons, this kit needs to be installed by a person with general mechanical knowledge using the proper tools.

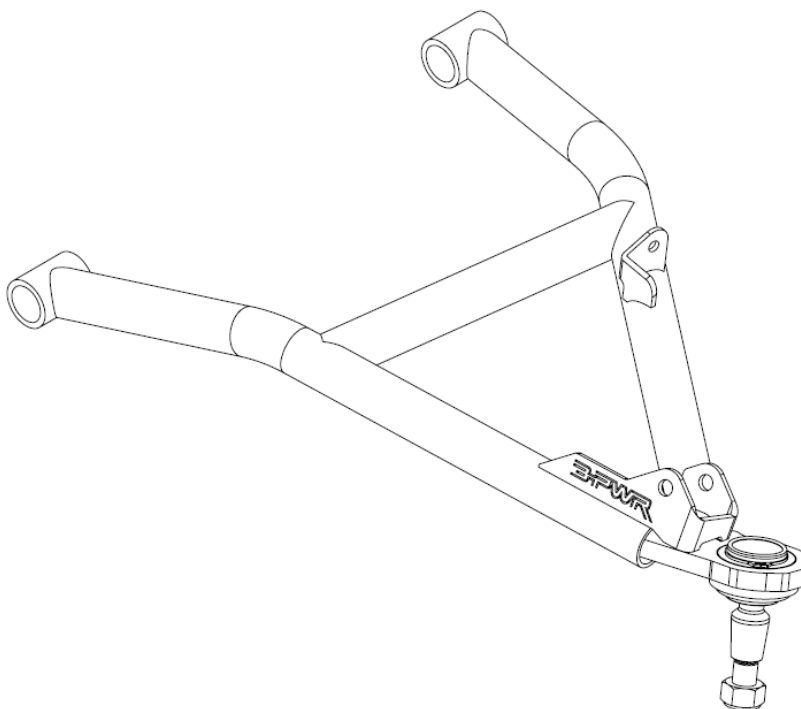
The illustrations in this document indicate the typical structure of the various assemblies. It is therefore possible that they do not represent the exact form of the parts or the manufacturing details. These illustrations are intended to identify parts that perform an identical or similar function.

2. VEHICULE PREPERATION

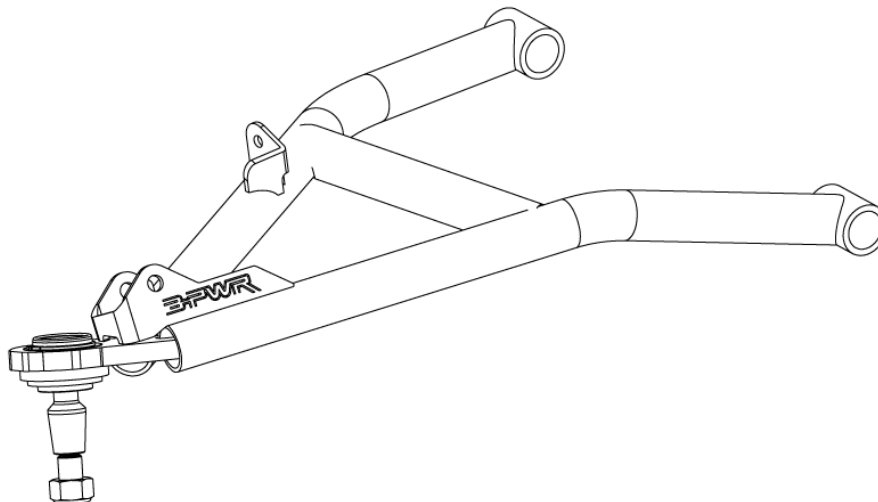
- 2.1 Read all the instructions carefully before installing the product.
- 2.2 Make sure you have enough space to work properly.
- 2.3 Refer to vehicle owner's manual for removal of various panels and other parts.

Note : unless there is a difference between the left and right side of the snowmobile, the following steps and procedures will only be applied to one side of the snowmobile. We expect you to use the same steps for the other side of the snowmobile. Left and right side are defined as when sitting on the vehicule.

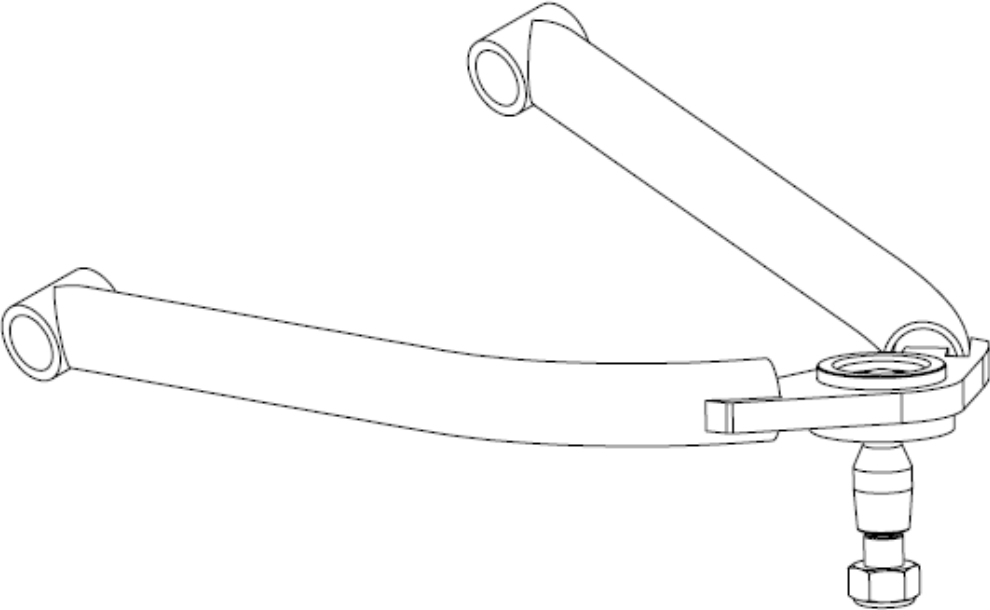
PARTS – SXT-34-LL – [P1]



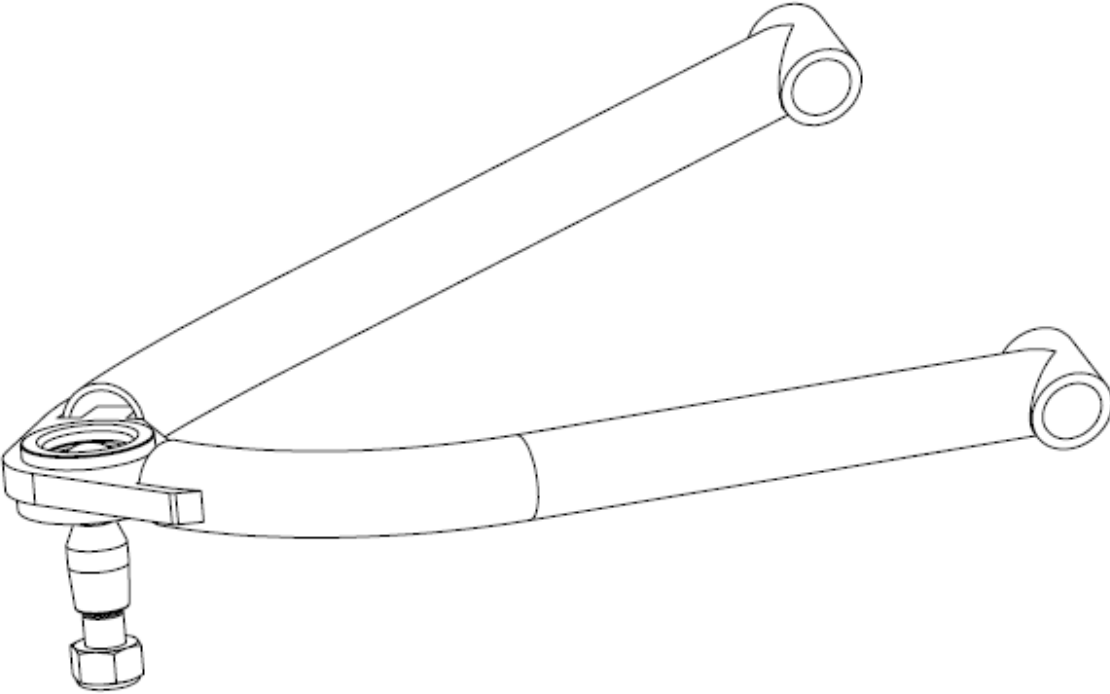
SXT-34-LR – [P2]



SXT-34-UL – [P3]



SXT-34-UR – [P4]



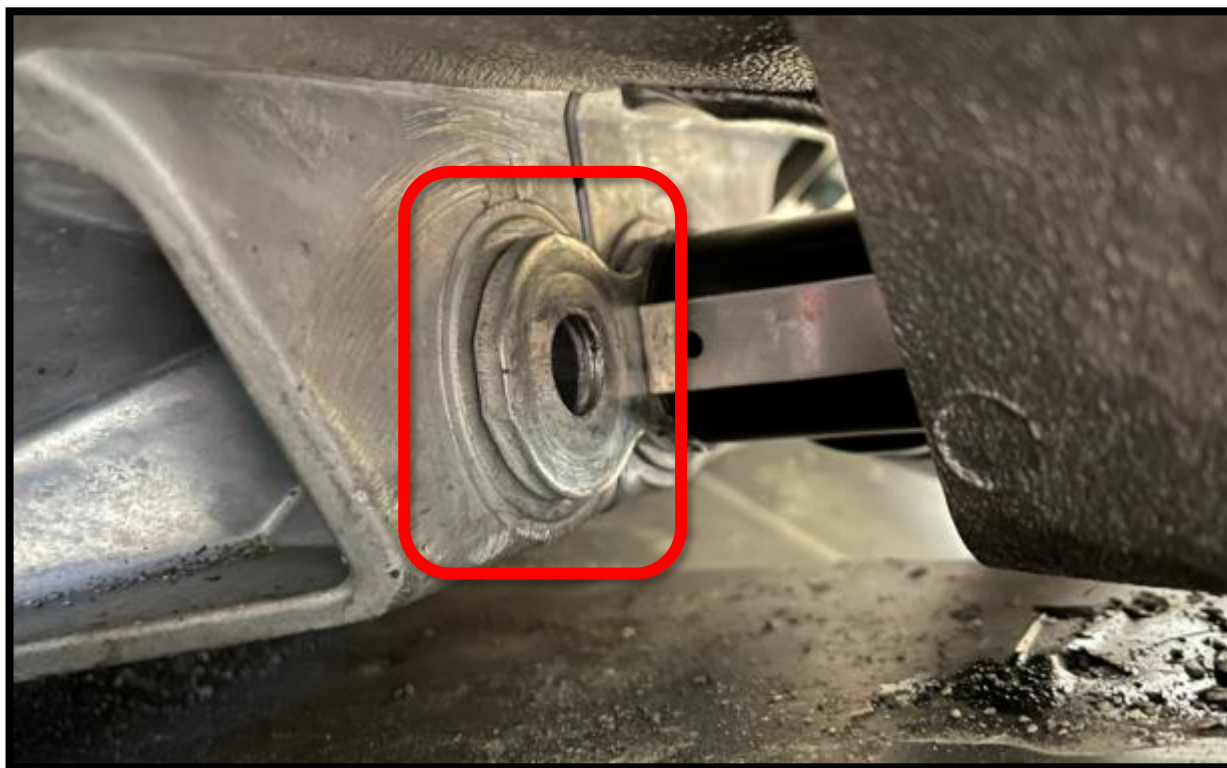
3. INSTRUCTIONS

3.1 Disassemble all the parts required for you to take the OEM a-arm off the machine. Do not throw any parts away, as some pieces are reused in the assembly of your B-PWR a-arm kit.

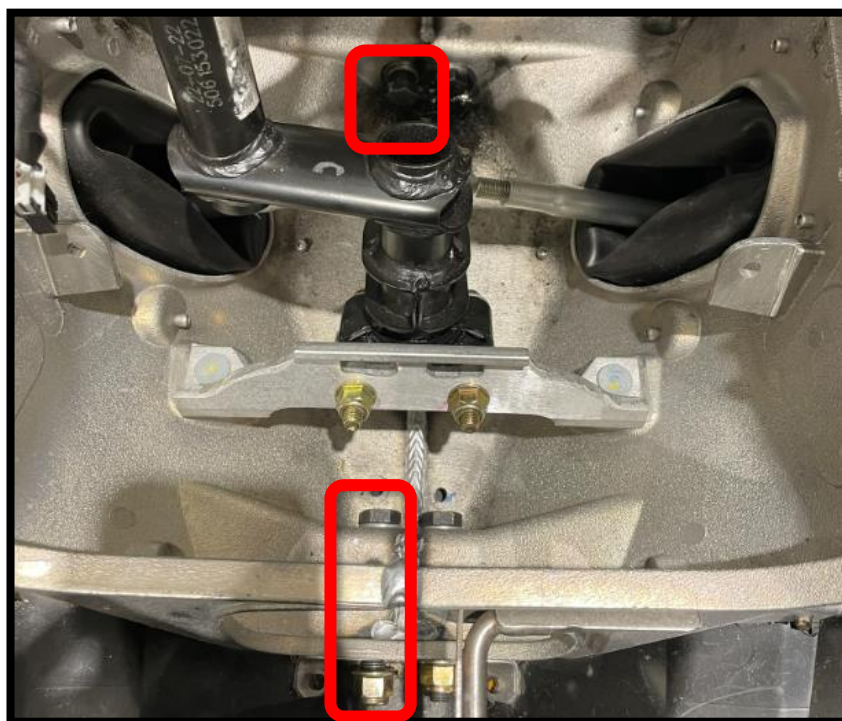
3.2 Start by installing the lower control arm [P1] or [P2]. Reuse the OEM bushings in your B-PWR control arm. See picture below for more details.



3.3 Once the bushing are inserted in your lower control arm [P1] or [P2], you can now install your lower control arm [P1] or [P2] on the machine. Pay special attention to the spacer plate included with the snowmobile, it must be aligned with the axis of the control arm's bushing during the installation. See picture below for more details.



3.4 Once to lower control arm [P1] or [P2] is in place, reinstall all your nuts and bolts. Make sure to discarded of the old elastic nut and use the new nuts included in your B-PWR kit. See picture below for more details.



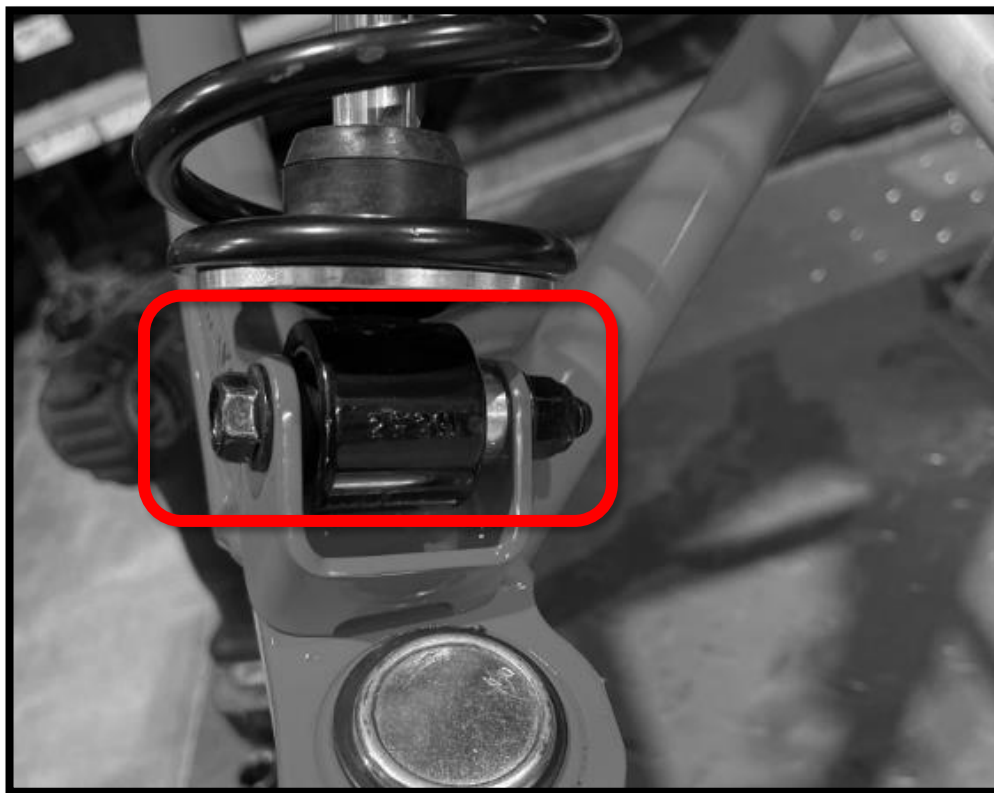
3.5 Tighten the nuts and bolts to the manufacture's specs.



3.6 Put the shock and swaybar back in their place, reinstall all your nuts and bolts. Make sure to discard the old elastic nut and use the new nuts included in your B-PWR kit. See picture below for more details.



Warning ; when installatin the shock, the hardware's installation sequence is crutal. See picture below for clarification on the installation sequence. You only need to reuse one of the two OEM aluminium spacers.



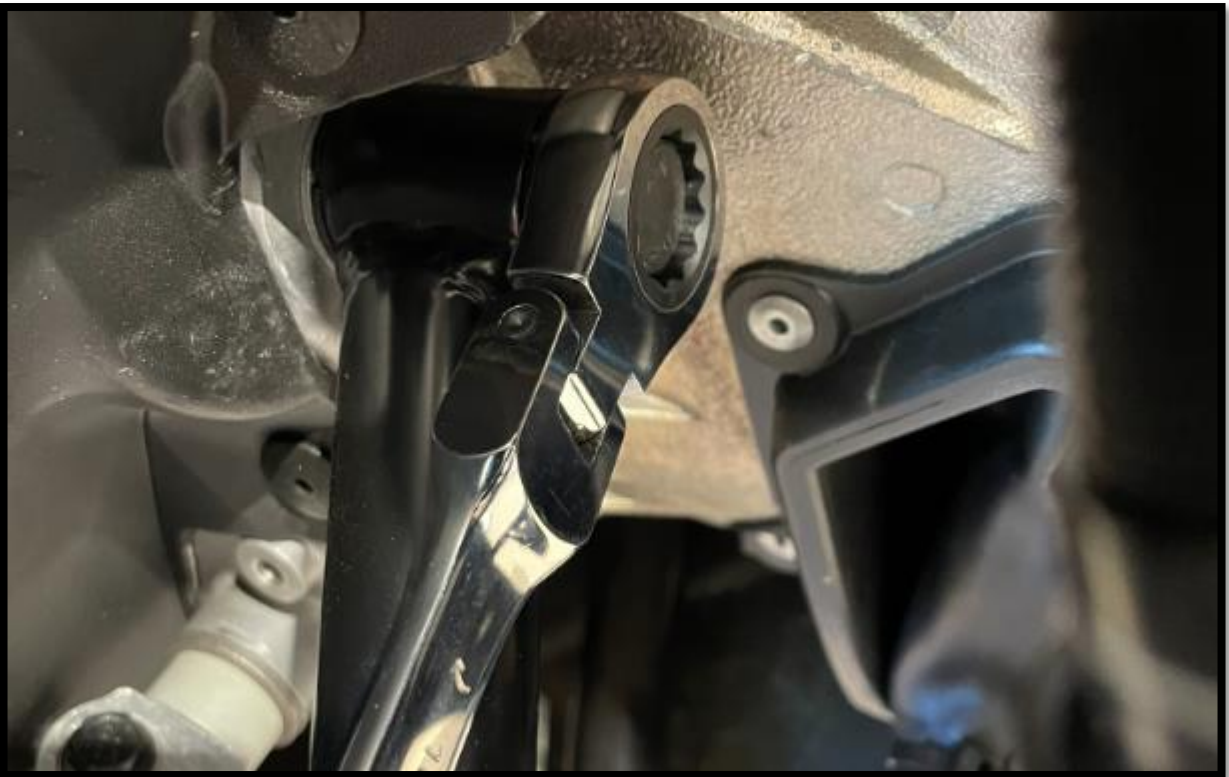
3.7 Repeat step 3.1 for the upper control arm [P3] or [P4]. Once the OEM spacers and bushings are installed in the control arm, insert your two bolts and four washers. See picture below for more details.



3.8 Now, install your upper control arm [P3] or [P4]. On the snowmobile. Make sure to discard of the old elastic nut and use the new nuts included in your B-PWR kit. See picture below for more details.



3.9 Tighten the nuts and bolts to the manufacture's specs.



3.10 Once both upper and lower control arms installed on the snowmobile, reinstall the spindle. Once again, make sure to discard the old elastic nut and use the new nuts included in your B-PWR kit. See picture below for more details.



3.11 Tighten the nuts and bolts to the manufacturer's specs.



3.12 Reinstall your ski. Don't forget the ski rubber that goes between the spindle and the ski. See picture below for more details.



3.13 Tighten the nuts and bolts to the manufacture's specs.



3.14 install the tie rod end in the spindle.



3.13 Tighten the nuts and bolts to the manufacturer's specs. At the point, it is possible that an adjustment is required in your steering alignment. Follow the manufacturer recommendations for this step. End of installation.



Thank you for choosing B-PWR.