



INSTALLATION GUIDE

Thank you for choosing a B-PWR product, designed by passionate riders who focus on what users really need.

1. SAFETY INSTRUCTIONS

To avoid any unfortunate situations, we recommend that you get to know how your modified vehicle handles before using it in extreme conditions.

Read all the instructions carefully before installing this product.

If you do not have the tools or technical knowledge needed to ensure proper installation, have the product installed by an authorized dealer.

⚠ WARNING

It is essential that you follow the installation procedures, possess general mechanical knowledge and use appropriate tools to ensure a safe and reliable installation.

Improper use or installation of the product, or any modifications made to adapt the product for use in a context other than that for which it was intended, voids the warranty and may result in **SERIOUS INJURIES**.

B-PWR and all its affiliated companies, as well as its suppliers and distributors, are not responsible for any consequences whatsoever resulting from an incorrect installation or an improper use of the product.

This guide provides detailed instructions for installing the product.

AVAILABLE KIT

Spring bushing

COMPATIBILITY

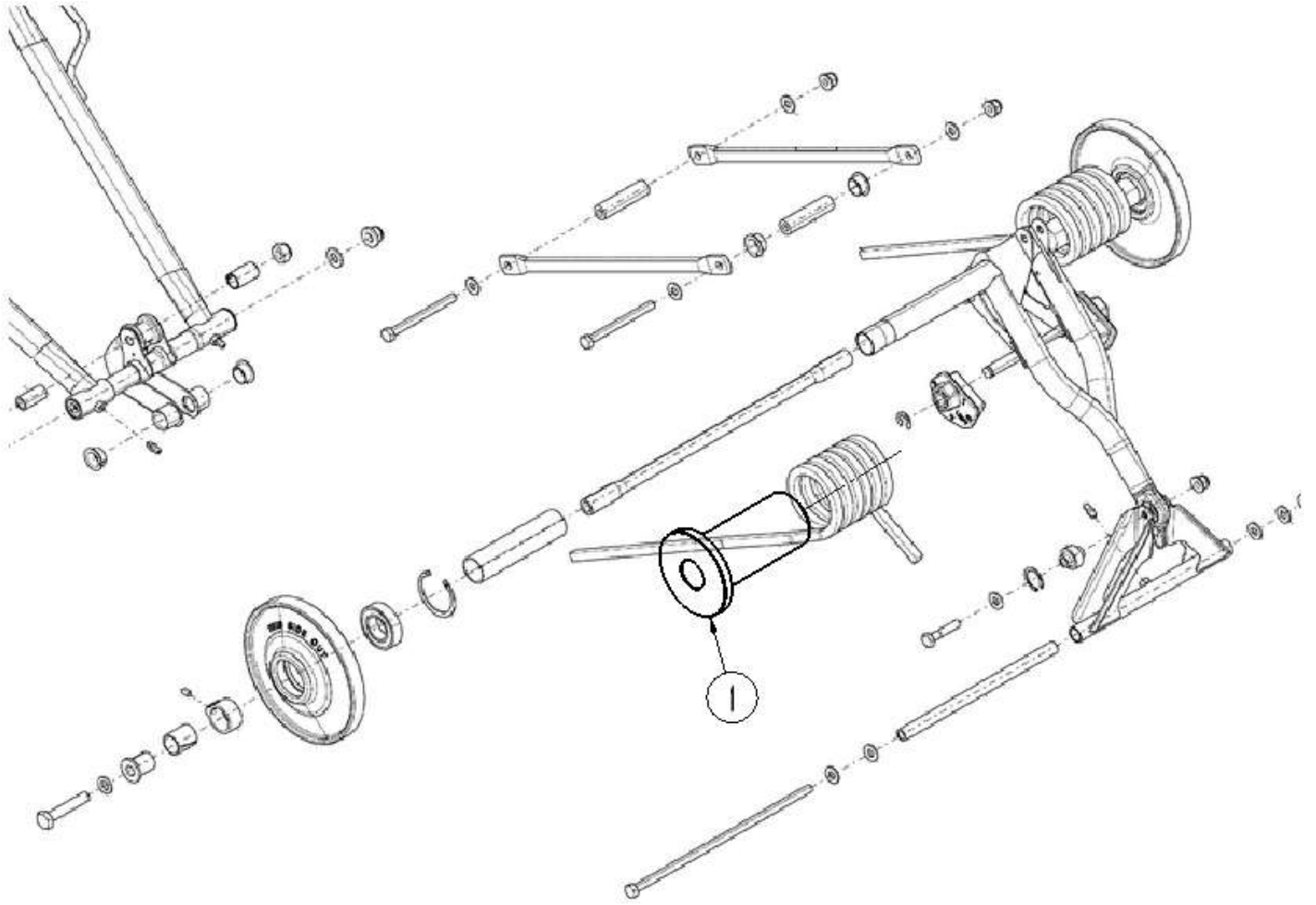
Ski-Doo Summit G4

⚠ WARNING

For safety reasons, this kit needs to be installed by a person with general mechanical knowledge using the proper tools.

The illustrations in this document indicate the typical structure of the various assemblies. It is therefore possible that they do not represent the exact form of the parts or the manufacturing details. These illustrations are intended to identify parts that perform an identical or similar function.

2. PARTS



PART	DESCRIPTION	QTY	PART NUMBER
P1	Bague de ressort	2	BRPSG4BR

3. VEHICLE PREPARATION

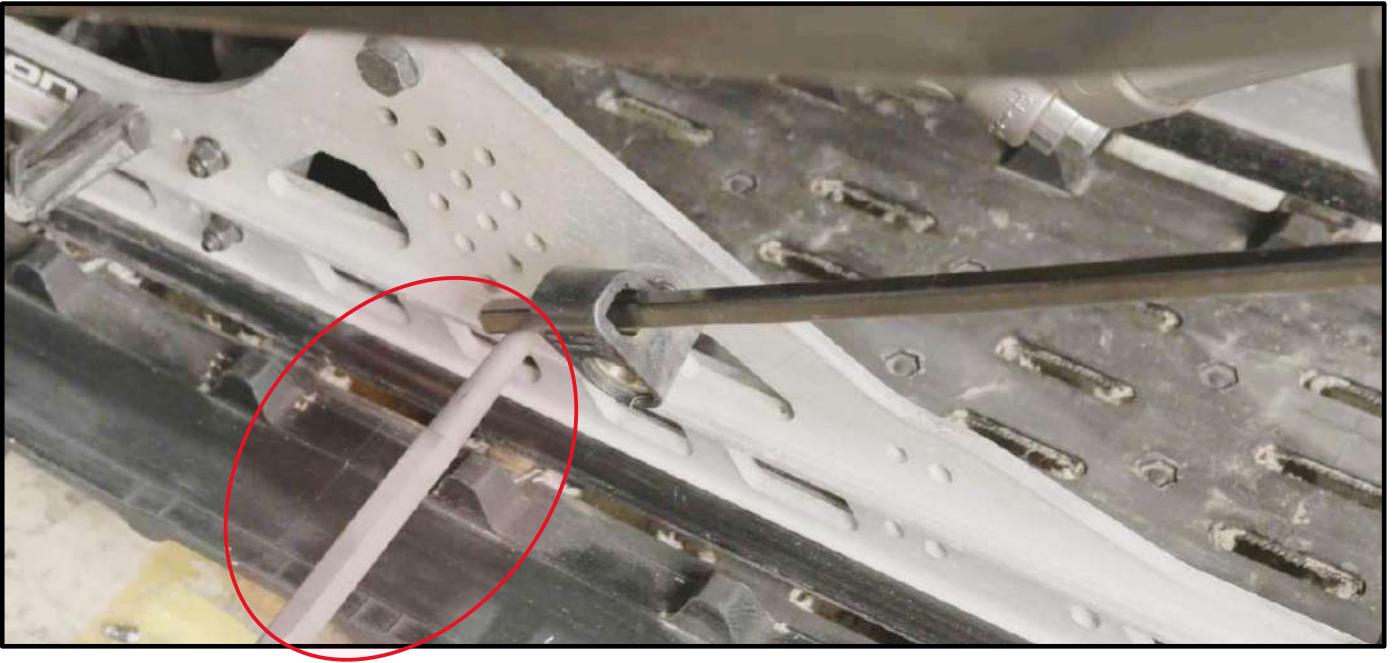
- 3.1 Read all the instructions carefully before installing the product.
- 3.2 Make sure you have enough space to work properly.
- 3.3 Make sure to have the required tools.
- 3.4 Refer to vehicle owner's manual for removal of various panels and other parts.

Note: Unless differences occur between left hand (LH) and right hand (RH) sides, the procedures are shown for only one side of the vehicle. Repeat for other side. Right and left sides are defined as when sitting on the vehicle.

4. INSTRUCTIONS

- 4.1 Lift the rear of the snowmobile and, for security, insert a blocker in the rail as the spring will in tension.





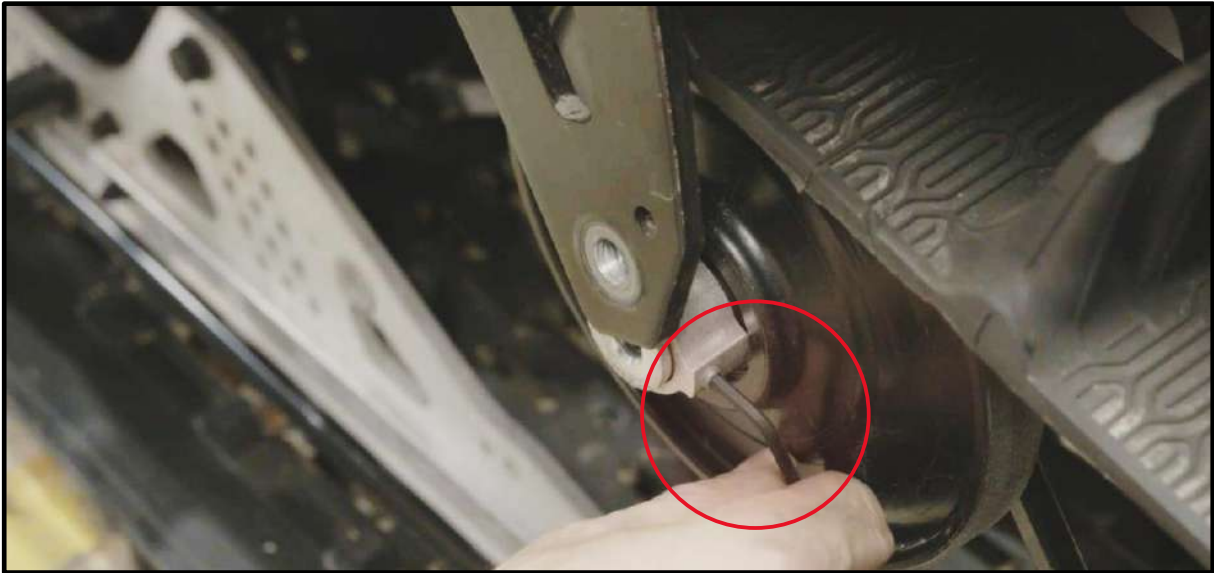
4.2 Unscrew the screw of the spring support piece, while holding the spring. Once unscrewed place the spring towards the rear of the vehicle.





4.3 Unscrew the hex bolt and small screw to remove the spacer and wheel.





4.4 Use a knife to remove any plastic stuck on the shaft. Insert the B-PWR spring bushing [P1]



4.5 Re-install the wheel, spacer and small screw Remonter la roue, l'espaceur et la vis à 6 pan creux (see vehicle user manual for tightening torque). Lower the back of the snowmobile.



4.6 Adjust the position with the help of a bar to lift the rail, and insert the hex bolt. (see vehicle user manual for tightening torque)



4.7 List the rear os the snowmobile, replace the spring forward (tension) and replace the spring support. Remonter le derière de la motoneige, remettre le ressort vers l'avant (en tension) et remettre le support (see vehicle user manual for tightening torque)



