



INSTALLATION GUIDE

Thank you for choosing a B-PWR product, designed by passionate riders who focus on what users really need.

1. SAFETY INSTRUCTIONS

To avoid any unfortunate situations, we recommend that you get to know how your modified vehicle handles before using it in extreme conditions.

Read all the instructions carefully before installing this product.

If you do not have the tools or technical knowledge needed to ensure proper installation, have the product installed by an authorized dealer.

⚠ WARNING

It is essential that you follow the installation procedures, possess general mechanical knowledge and use appropriate tools to ensure a safe and reliable installation.

Improper use or installation of the product, or any modifications made to adapt the product for use in a context other than that for which it was intended, voids the warranty and may result in **SERIOUS INJURIES**.

B-PWR and all its affiliated companies, as well as its suppliers and distributors, are not responsible for any consequences whatsoever resulting from an incorrect installation or an improper use of the product.

This guide provides detailed instructions for installing the product.

AVAILABLE KIT

ATC - Slash

COMPATIBILITY

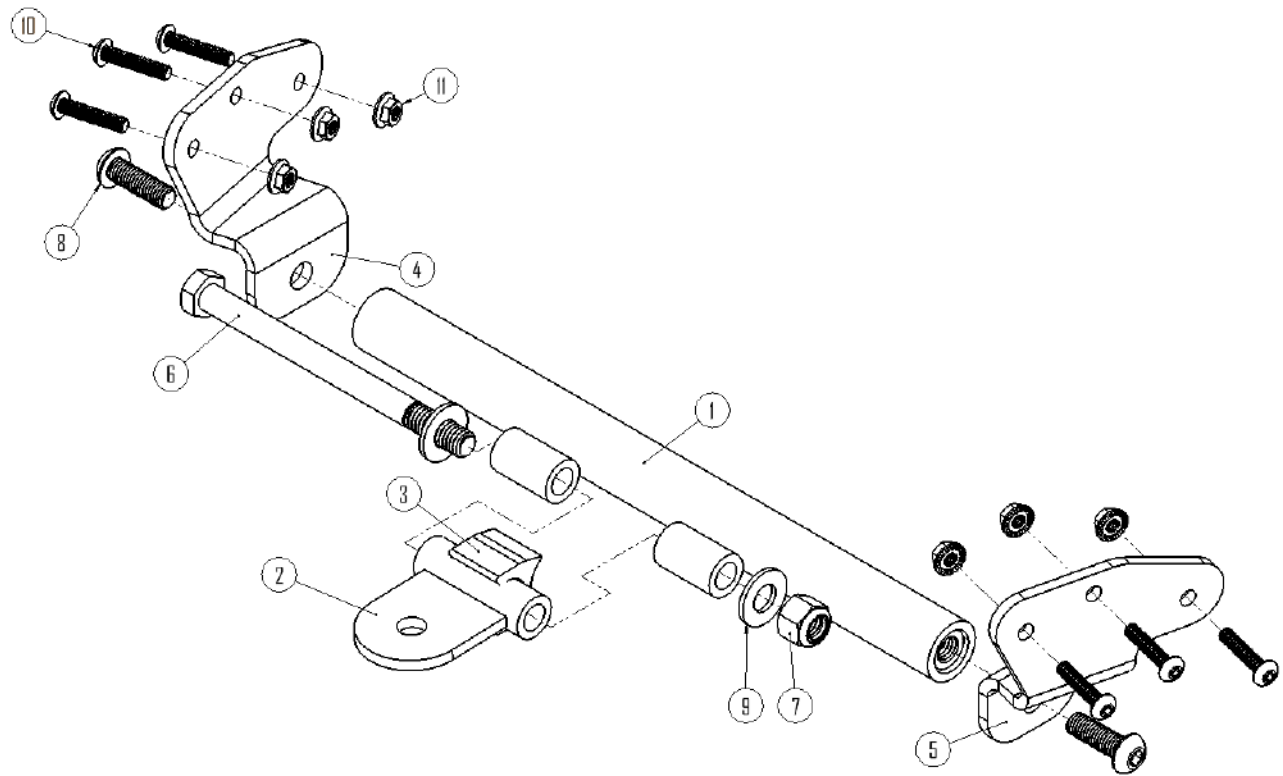
B-PWR rear bumper on Polaris Slash 146 - 155 - 165

⚠ WARNING

For safety reasons, this kit needs to be installed by a person with general mechanical knowledge using the proper tools.

The illustrations in this document indicate the typical structure of the various assemblies. It is therefore possible that they do not represent the exact form of the parts or the manufacturing details. These illustrations are intended to identify parts that perform an identical or similar function.

2. PARTS- ATC-Slash



| PART | DESCRIPTION | QTY | PART NUMBER |
|------|--|-----|---------------|
| P1 | Tube with nut - Slash | 1 | K05-ATC-SLASH |
| P2 | Tongue | 1 | |
| P3 | Tongue Stopper | 1 | |
| P4 | Left lateral support Slash | 1 | |
| P5 | Right lateral support Slash | 1 | |
| P6 | Hex bolt - 3/8-16 X 4 3/4" Partially Threaded 1" | 1 | |
| P7 | Nut - 3/8-16 - Nylon | 1 | |
| P8 | Screw - 3/8-16 X 1 1/4" - Fully Threaded | 2 | |
| P9 | Washer - 3/8 | 2 | |
| P10 | Screw M5 - 0,8 X 25 MM - Fully -Threaded | 6 | |
| P11 | Nut - Flanged - M5 - 0,8 - Nylon | 6 | |

3. PREPARATION

Read all the instructions carefully before installing the product.
Make sure you have enough space to work properly.
Make sure to have the required tools.

4. INSTRUCTIONS

Note: Unless differences occur between left hand (LH) and right hand (RH) sides, the procedures are shown for only one side of the vehicle. Repeat for other side. Right and left sides are defined as when sitting on the vehicle.

4.1 Insert the stopper [P3] on the tongue [P2].



4.2 Align the hex bolt [P6], the washers [P9], the small tube [P1], the tongue [P2] as illustrated below.



4.3 Tighten the hex bolt and nut [P6 - P7].



| TIGHTENING TORQUE | |
|-------------------------------------|---------------------------------------|
| Bolt and hex nut 3/8 - 16 [P6 - P7] | 48 N•m ± 6 N•m (35 lbs/pi ± 4 lbs/pi) |

4.4 Put Loctite on the threads of the 2 bolts 3/8" [P8].



4.5 Hand tighten the screws [P8] through the left lateral support [P4] and through the right lateral support [P5] into the tube [P1].



4.6 Align the hitch attachment with the holes in the bumper and install 2 M5 screws [P10] through the lateral supports and bumper; hand-tighten.

Note : Vérifier le sens des vis et écrous (Voir vue éclatée).



4.7 Using a 3/16" bit, drill a hole through the center hole of each lateral support [P4 - P5].



4.8 Install screw [P10] into the drilled hole, and hand-tighten nut [P11] onto it.



4.9 Tighten all 6 screws in lateral supports. [P10 - P11].



| TIGHTENING TORQUE | |
|---------------------------|--|
| Screw and nut [P10 - P11] | 5.0 N•m ± 0.5 N•m (44 lbs/ft ± 4 lbs/ft) |

4.10 Orient the tube [P1] in order for the tongue [P2] to be rear-facing.



4.11 Tighten the 2 screws [P8]



| TIGHTENING TORQUE | |
|----------------------------|---------------------------------------|
| Screw 3/8-16 X 1 1/4" [P8] | 48 N•m ± 6 N•m (35 lbs/pi ± 4 lbs/pi) |