



# INSTALLATION GUIDE

Thank you for choosing a B-PWR product, designed by passionate riders who focus on what users really need.

## 1. SAFETY INSTRUCTIONS

To avoid any unfortunate situations, we recommend that you get to know how your modified vehicle handles before using it in extreme conditions.

Read all the instructions carefully before installing this product.

If you do not have the tools or technical knowledge needed to ensure proper installation, have the product installed by an authorized dealer.

### ⚠ WARNING

It is essential that you follow the installation procedures, possess general mechanical knowledge and use appropriate tools to ensure a safe and reliable installation.

Improper use or installation of the product, or any modifications made to adapt the product for use in a context other than that for which it was intended, voids the warranty and may result in **SERIOUS INJURIES**.

B-PWR and all its affiliated companies, as well as its suppliers and distributors, are not responsible for any consequences whatsoever resulting from an incorrect installation or an improper use of the product.

This guide provides detailed instructions for installing the product.

### AVAILABLE KIT

ATC-P, ATC-S

### COMPATIBILITY

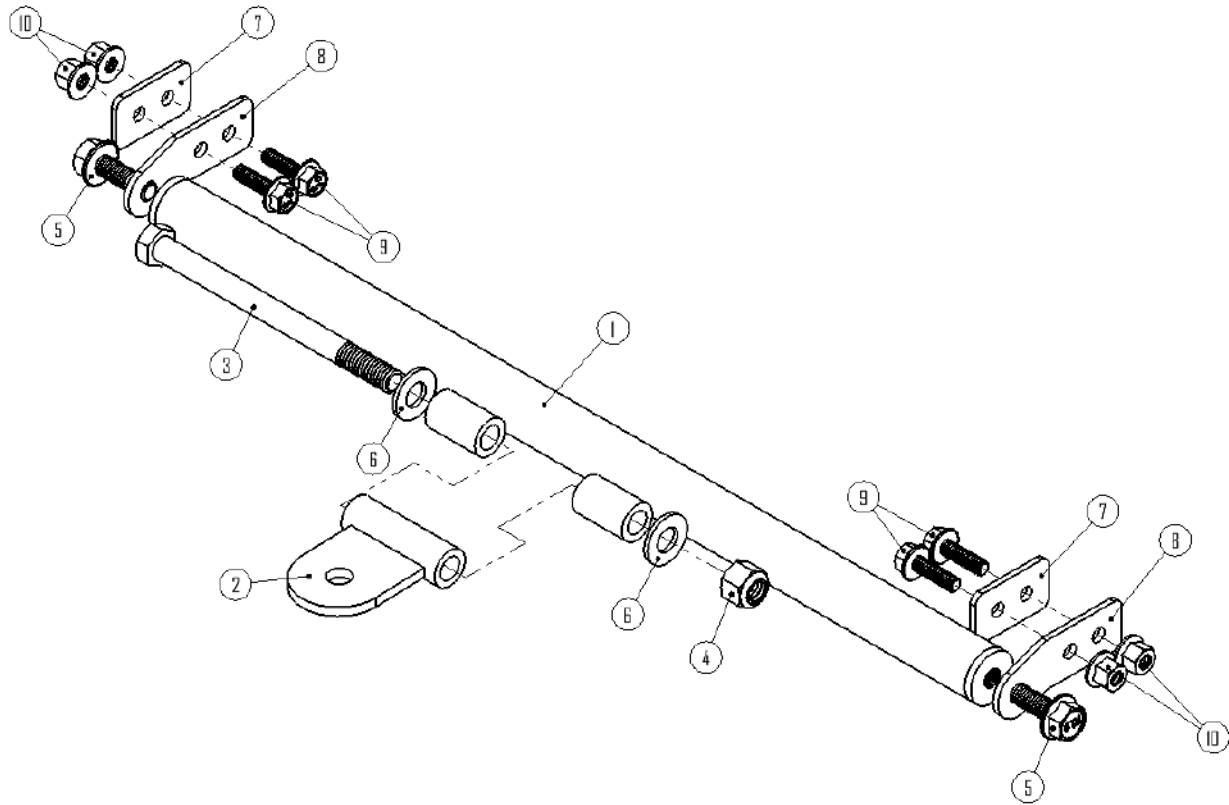
B-PWR rear bumper on XM/XS, G4, Pro-Ride, Axys platform

### ⚠ WARNING

For safety reasons, this kit needs to be installed by a person with general mechanical knowledge using the proper tools.

The illustrations in this document indicate the typical structure of the various assemblies. It is therefore possible that they do not represent the exact form of the parts or the manufacturing details. These illustrations are intended to identify parts that perform an identical or similar function.

## 2. PARTS



PART	DESCRIPTION	QTY	PART NUMBER
P1	Tube but BRP / Polaris	1	K05-ATC-P / K05-ATC-S
P2	Tongue	1	
P3	Screw 3/8-16 X 4 3/4" Partially Threaded 1"	1	
P4	Lock Nuts - 3/8-16 - Nylon	1	
P5	Screw Hex - 3/8-16 X 1 1/4" - Fully Threaded	2	
P6	Washer - 3/8	6	
P7	Spacer 2 holes Bracket	2	
P8	Spacer 3 holes Bracket	2	
P9	Screw Hex - M6 -1X20 MM - Fully Threaded	4	
P10	Lock Nuts – Flanged – M6 - Nylon	4	

### 3. INSTRUCTIONS

Read all the instructions carefully before installing the product.  
Make sure you have enough space to work properly.  
Make sure to have the required tools.

*Note: Unless differences occur between left hand (LH) and right hand (RH) sides, the procedures are shown for only one side of the vehicle. Repeat for other side. Right and left sides are defined as when sitting on the vehicle.*

3.1 Install ATC 3 trous Bracket [P8] on Tube with nut BRP / Polaris [P1] with Button Head Cap Screw 3/8 - 16 X 1 1/4" [P5] using wrench key.

*Note: To make a good adjustment on rear bumper use Washer - Inch - 3/8 plated washer [P6].*



3.2 Position Tube with nut BRP / Polaris [P1] on rear bumper as shown.



3.3 Make sure Tube with nut BRP / Polaris [P1] is horizontal as shown.



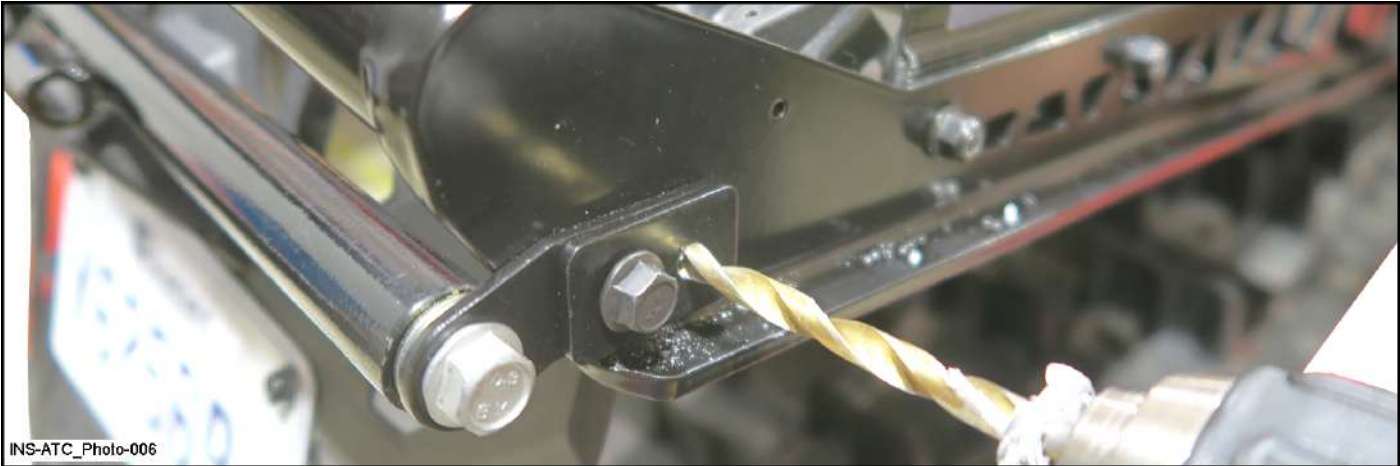
3.4 Secure Tube with nut BRP / Polaris [P1] with locking c-clamp and mark one (1) hole in bumper using ATC 3 trous Bracket - holes bracket [P8] as a template with drill bit 3/16" as shown.



3.5 Remove Tube with nut BRP / Polaris [P1] drill one (1) hole in bumper using mark made earlier as shown.



3.6 Secure ATC 2 trous Bracket [P7] on Tube with nut BRP / Polaris [P1] with Hex Head Cap Screw - M6 - 1X20 MM - Fully Threaded [P9], Lock Nuts - Flanged - M6 - Nylon [P10] and drill one (1) hole in bumper using ATC 2 trous Bracket [P7] as a template with drill bit 3/16" as shown.



3.7 Remove ATC 2 trous Bracket [P7] and secure in good position with two (2) Hex Head Cap Screw - M6 - 1X20 MM - Fully Threaded [P9] and Lock Nuts - Flanged - M6 - Nylon [P10].



TIGHTENING TORQUE	
Lock Nuts - Flanged - M6 - Nylon [P10]	10 N•m ± 2 N•m

3.8 Install Languette [P2] with two (1) Washer 3/8 [P6], 3/8 - 16 X 4 3/4" Partially Threaded 1" [P3] and Lock Nuts - 3/8 - 16 - Nylon [P4]. Screw first threads of Lock Nuts - 3/8 - 16 - Nylon [P4] by hand.



3.9 Secure Languette [P2] with two (2) 9/16" wrench key.



TIGHTENING TORQUE	
Lock Nuts - 3/8 - 16 - Nylon [P4]	48 N•m ± 6 N•m

*Model that do not required brackets*

4.11 Drill one (1) hole in bumper at pre-drilled hole location with drill bit 3/16" as shown.



4.12 Install Tube with nut BRP / Polaris [P1] on bumper] with Button Head Cap Screw – Hex - Inch - UNF - 3/8 - 16 X 1 1/4" - Fully Threaded [P5].

*Note: To make a good adjustment on rear bumper use Washer - Inch - 3/8 plated washer [P6].*



4.13 Screw first threads of Hex - Inch - UNF - 3/8 - 16 X 1 1/4" - Fully Threaded [P5] by hand.



4.14 Secure Tube with nut BRP / Polaris [P1] on bumper with two (2) using wrench key.



4.15 Install Languette [P2] with two (1) Washer 3/8 [P6], 3/8 - 16 X 4 3/4" Partially Threaded 1" [P3] and Lock Nuts - 3/8 - 16 - Nylon [P4].





4.16 Screw first threads of Lock Nuts - 3/8 - 16 - Nylon [P4] by hand.



4.17 Secure Languette [P2] with two (2) 9/16" wrench key.



TIGHTENING TORQUE	
Lock Nuts - 3/8 - 16 - Nylon [P4]	48 N•m ± 6 N•m

End installation