



INSTALLATION GUIDE

Thank you for choosing a B-PWR product, designed by passionate riders who focus on what users really need.

1. SAFETY INSTRUCTIONS

To avoid any unfortunate situations, we recommend that you get to know how your modified vehicle handles before using it in extreme conditions.

Read all the instructions carefully before installing this product.

If you do not have the tools or technical knowledge needed to ensure proper installation, have the product installed by an authorized dealer.

⚠ WARNING

It is essential that you follow the installation procedures, possess general mechanical knowledge and use appropriate tools to ensure a safe and reliable installation.

Improper use or installation of the product, or any modifications made to adapt the product for use in a context other than that for which it was intended, voids the warranty and may result in **SERIOUS INJURIES**.

B-PWR and all its affiliated companies, as well as its suppliers and distributors, are not responsible for any consequences whatsoever resulting from an incorrect installation or an improper use of the product.

This guide provides detailed instructions for installing the product.

AVAILABLE KIT

ACRB-146, ACRB-154

COMPATIBILITY

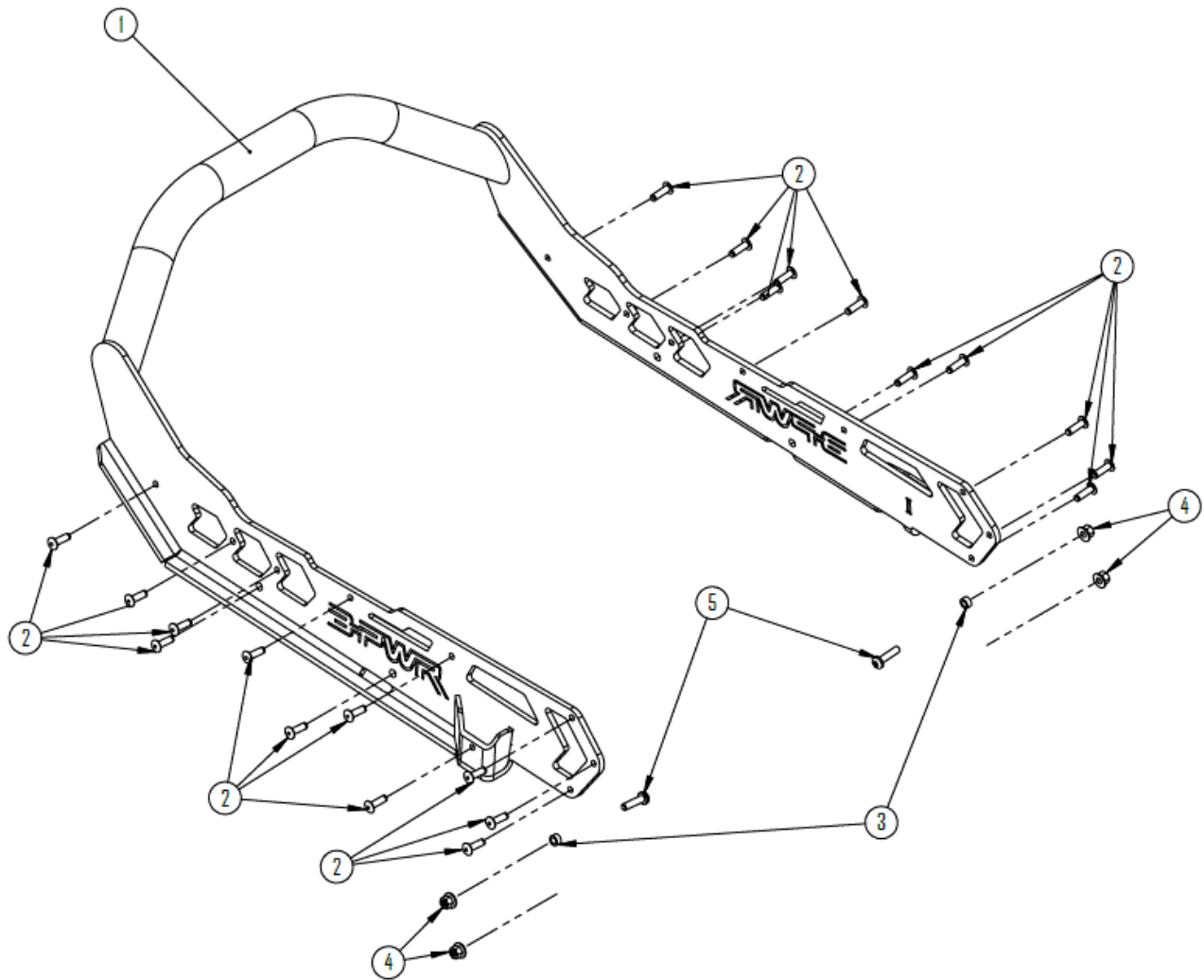
Arctic-Cat Catalyst platform

⚠ WARNING

For safety reasons, this kit needs to be installed by a person with general mechanical knowledge using the proper tools.

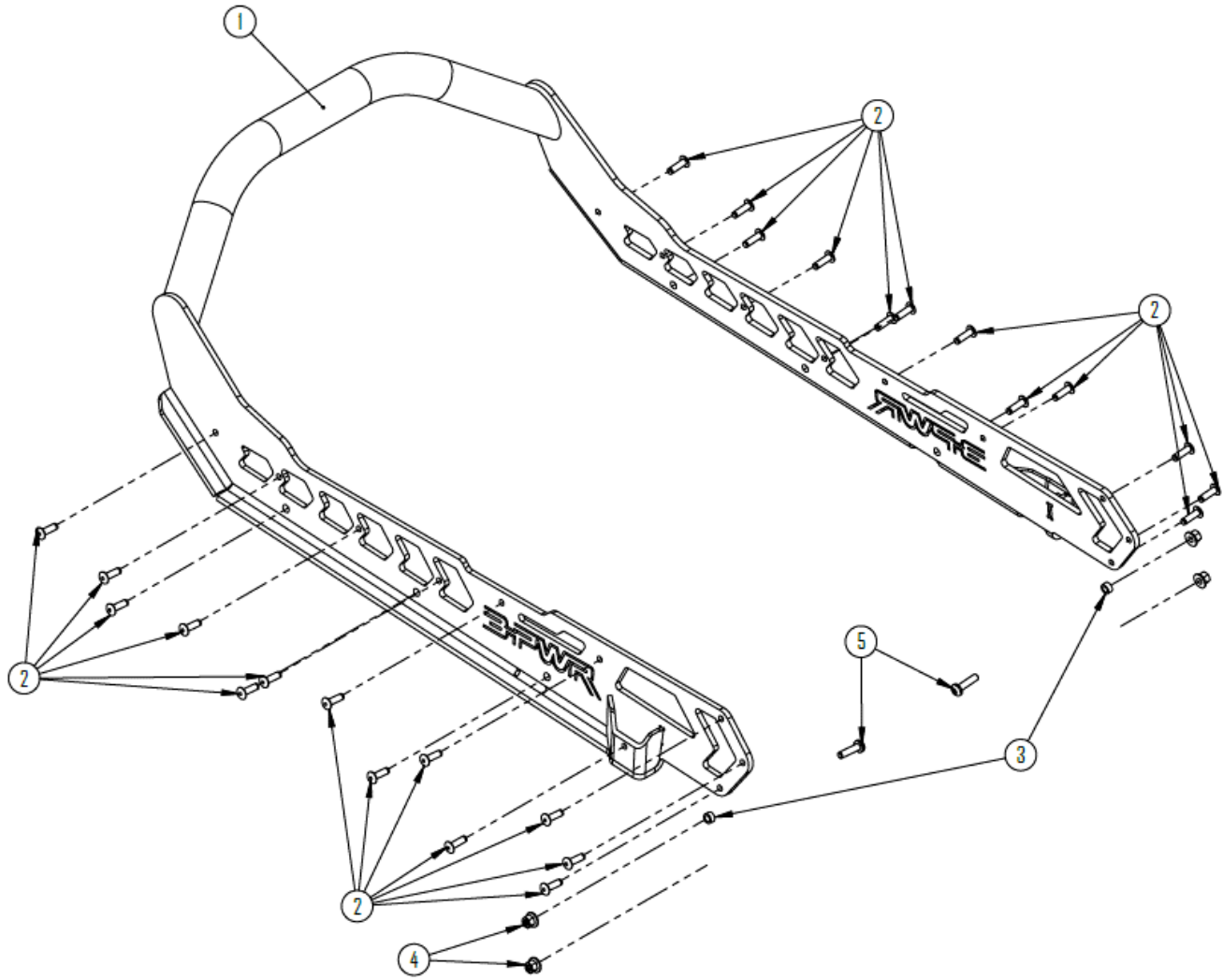
The illustrations in this document indicate the typical structure of the various assemblies. It is therefore possible that they do not represent the exact form of the parts or the manufacturing details. These illustrations are intended to identify parts that perform an identical or similar function.

2. PARTS – ACRB-146



PART	DESCRIPTION	QTY	PART NUMBER
P1	Rear bumper	1	K05-ACRB
P2	Blind rivet AB6-6A, 3/16 diameter, thickness ,250-,.375	22	
P3	Plastic spacer	2	
P4	Hexagonal nylon lock nut M5-0,8	4	
P5	Torx button head screw M5-0,8 x 16mm	2	

ACRB-154



PART	DESCRIPTION	QTY	PART NUMBER
P1	Rear bumper	1	
P2	Blind rivet AB6-6A, 3/16 diameter, thickness ,250-,.375	22	K05-ACRB
P3	Plastic spacer	2	
P4	Hexagonal nylon lock nut M5-0,8	4	
P5	Torx button head screw M5-0,8 x 16mm	2	

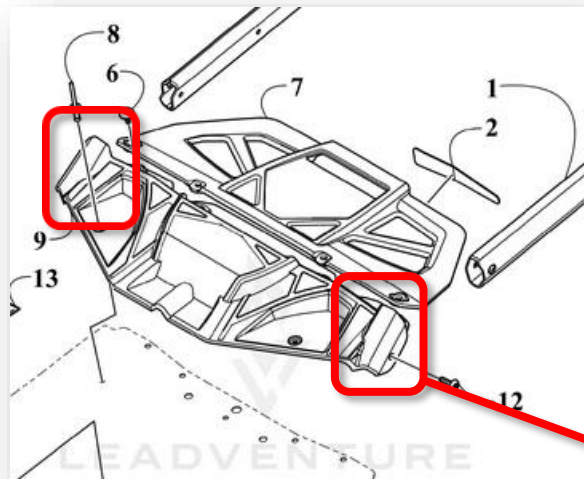
3. VEHICLE PREPARATION

- 3.1 Read all the instructions carefully before installing the product.
- 3.2 Make sure you have enough space to work properly.
- 3.4 Refer to vehicle owner's manual for removal of various panels and other parts.

4. INSTRUCTIONS

Note: Unless differences occur between left hand (LH) and right hand (RH) sides, the procedures are shown for only one side of the vehicle. Repeat for other side. Right and left sides are defined as when sitting on the vehicle.

4.1 Trim the rear snow flap as shown in the diagram below, so it does not protrude past both exterior faces of the tunnel. To help you trim it the right way, follow the example shown in the red box below. (see pictures below for more information).



4.2 Once the snow flap has been trimmed, dispose of the nylon lock nut used to hold the rear of the foot boards. You will find 4 screws and 2 lock nuts on each side of the machine. (See pictures below for more information).

Note: It is extremely important to discard the old lock nuts, as they can't be reused. Four new lock nuts are included in the box when you purchase your B-PWR bumper.

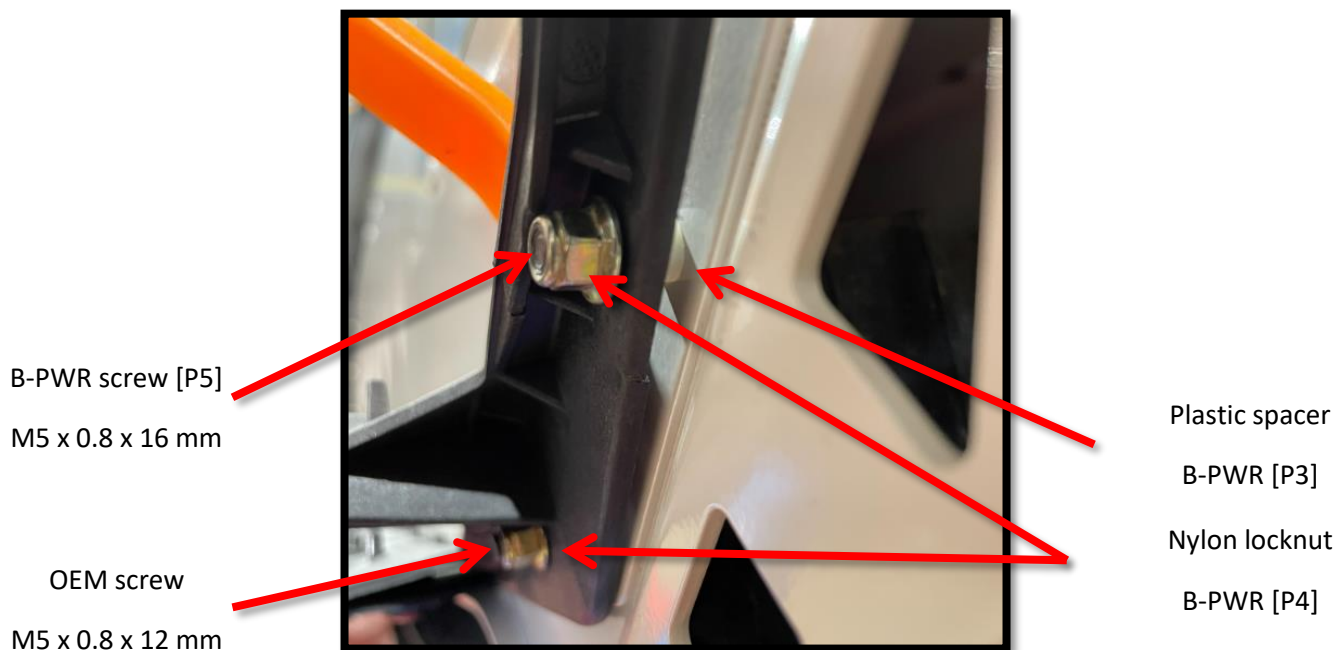


4.3 Insert your rear bumper [P1] into place. Pay special attention that the bumper fits without any efforts between the tunnel and running board assembly. If the fit is too tight, you can always unscrew the bolts shown in the previous section. (See pictures below for more information). Use the included rivets [P2] to align the bumper into the six existing holes.



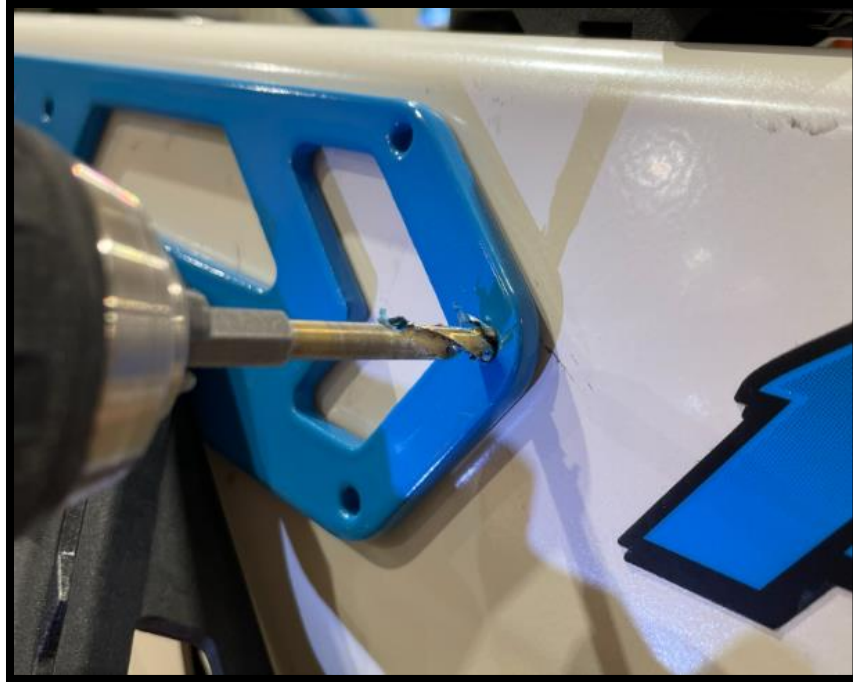
4.4 Once the rivets went into place, make sure to fasten them accordingly with the rear bumper [P1] and the tunnel.

4.5 Install the two M5 x 0.8 x 16 mm screws [P5], as well as the two plastic spacers [P3]. Pay attention to the installation order, as a wrong installation could cause extensive damage to your machine. Do not forget to replace the four locknuts [P4] with the ones included in your B-PWR kit.



TIGHTENING TORQUE	
M5 X 0.8 NYLON LUCKNUT [P4]	8 N•m ± 2 N•m

4.6 Drill the remaining rivet holes in tunnel using bumper as a template with drill bit 3/16" as shown.



4.7 Install the remaining rivets [P2] in the holes drilled in the previous section.



4.8 Rivet the entirety of the bumper [P1] and tunnel together.



End of installation, thank-you for choosing B-PWR.